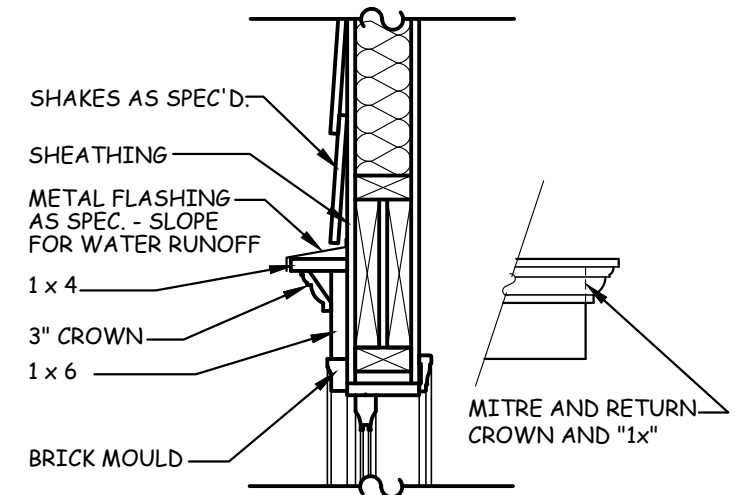
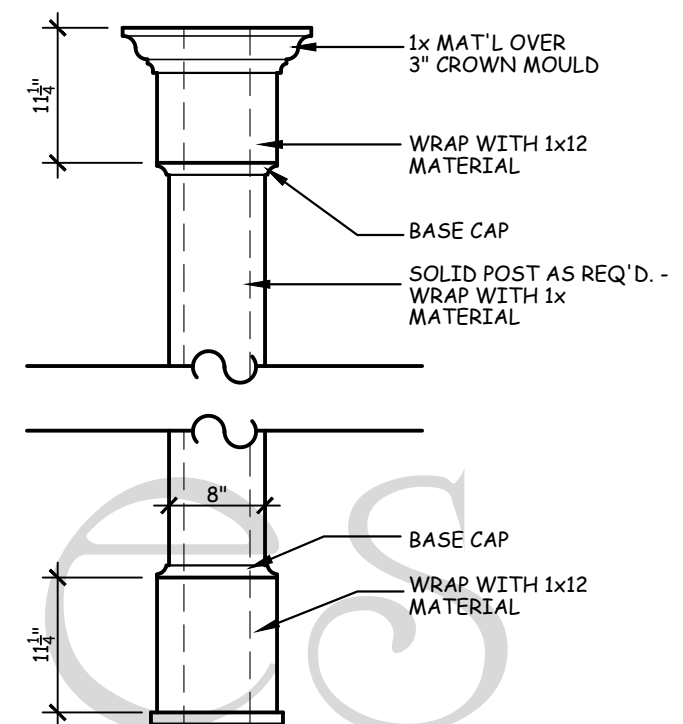


1 FRONT ELEVATION
A1.1 SCALE: 1/4" = 1'-0"



2 TYP. PEDIMENT DETAIL
A1.1 SCALE: 1" = 1'-0"



3 TYP. COLUMN DETAIL
A1.1 SCALE: 3/4" = 1'-0"

AMERICAN GABLES HOME DESIGNS, INC. hereby reserves its common law copyright and other property rights in these plans, designs, arrangements and ideas. These ideas, plans and designs are not to be reproduced, changed or copied in any form or manner whatsoever, nor are they to be assigned to any third party without first obtaining the express written permission from AMERICAN GABLES HOME DESIGNS, INC.

DAYTON
FRONT ELEVATION/
EXTERIOR DETAILS

American Gables
HOME DESIGNS, INC.
1230 Johnson Ferry Place * Suite J-10
Marietta, GA 30068 678-919-7717
www.AmericanGables.com

DRAWN BY: DAC

DATE: 05/08/20

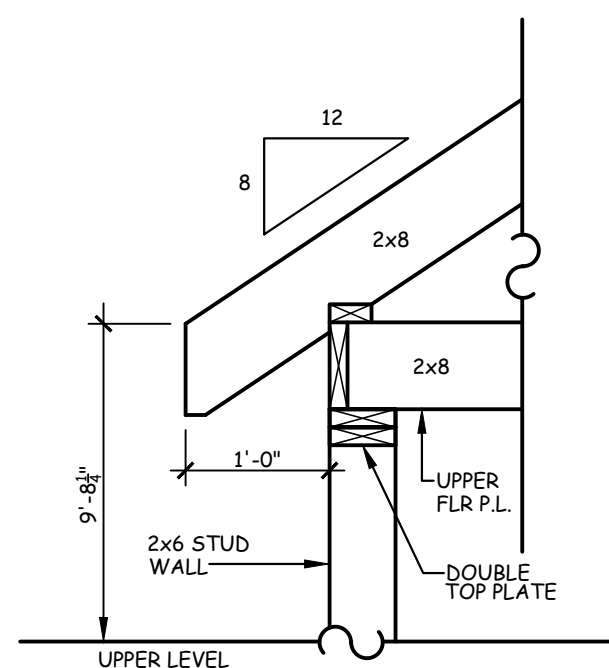
REVISIONS:

SHEET

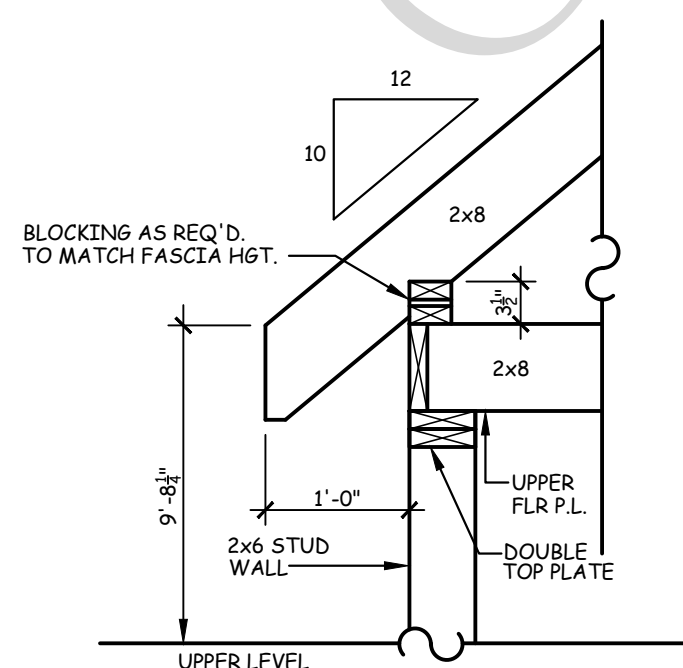
A1.1

NOTE:

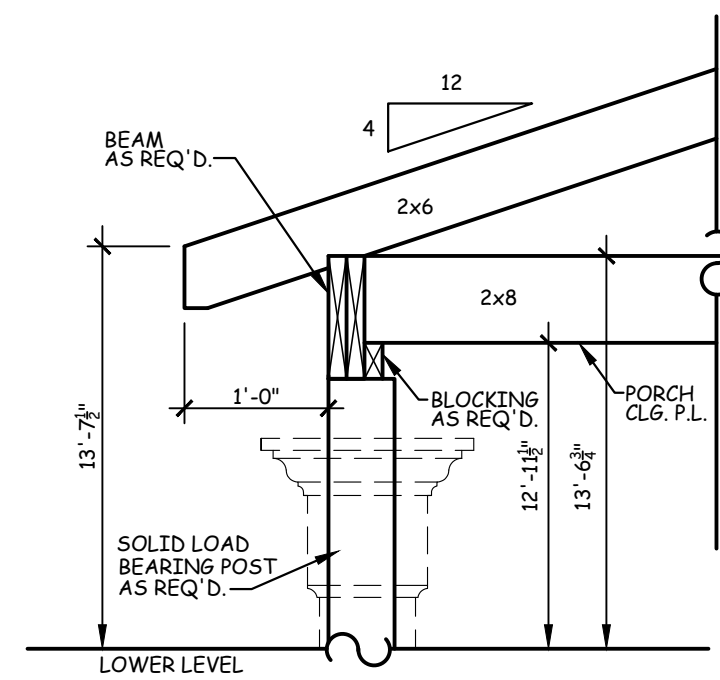
1. WHEN TWO ROOFS INTERSECT WITH DIFFERENT ROOF PITCHES, ADD BLOCKING TO STEEPER PITCH AS REQUIRED TO LINE UP FASCIAS AT A MINIMUM OF 1'-0" OVERHANG.
2. ELEVATIONS REFLECT A BASEMENT FOUNDATION. IF ANOTHER FOUNDATION IS USED, BUILDER SHOULD DISREGARD FOUNDATION SHOWN.



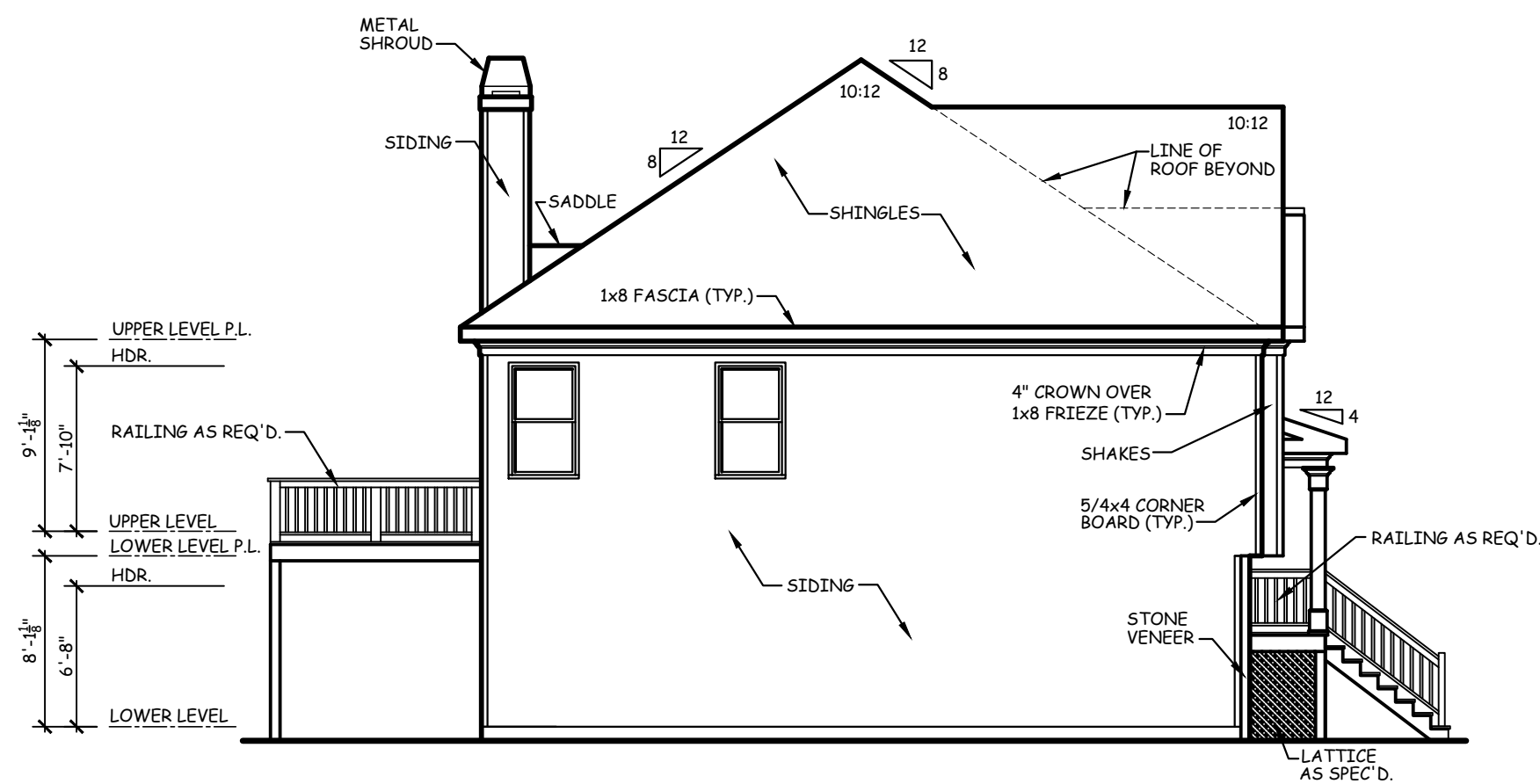
4 RAFTER FRAMING DETAIL
A1.1 SCALE: 3/4" = 1'-0"



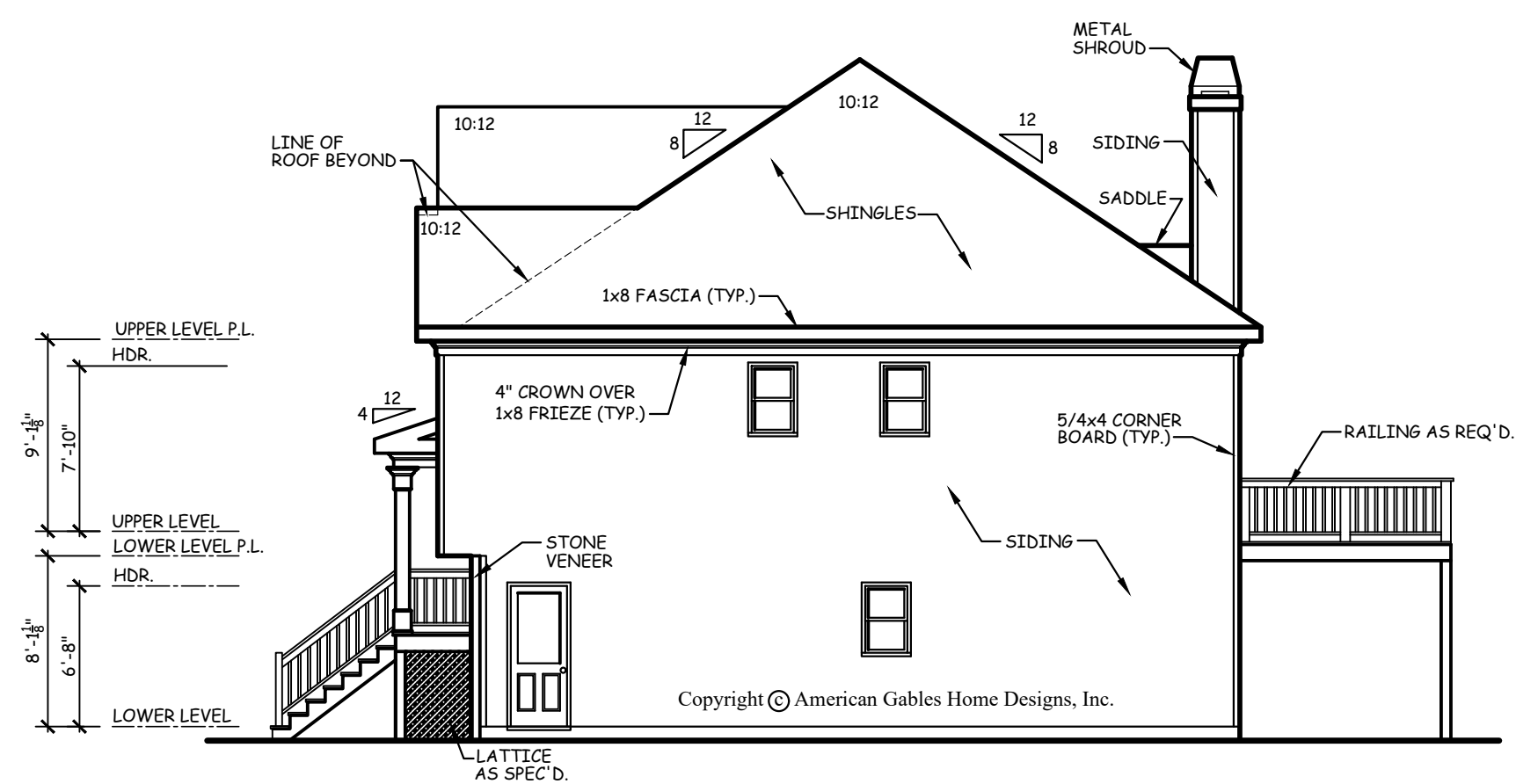
5 RAFTER FRAMING DETAIL
A1.1 SCALE: 3/4" = 1'-0"



6 PORCH FRAMING DETAIL
A1.1 SCALE: 3/4" = 1'-0"

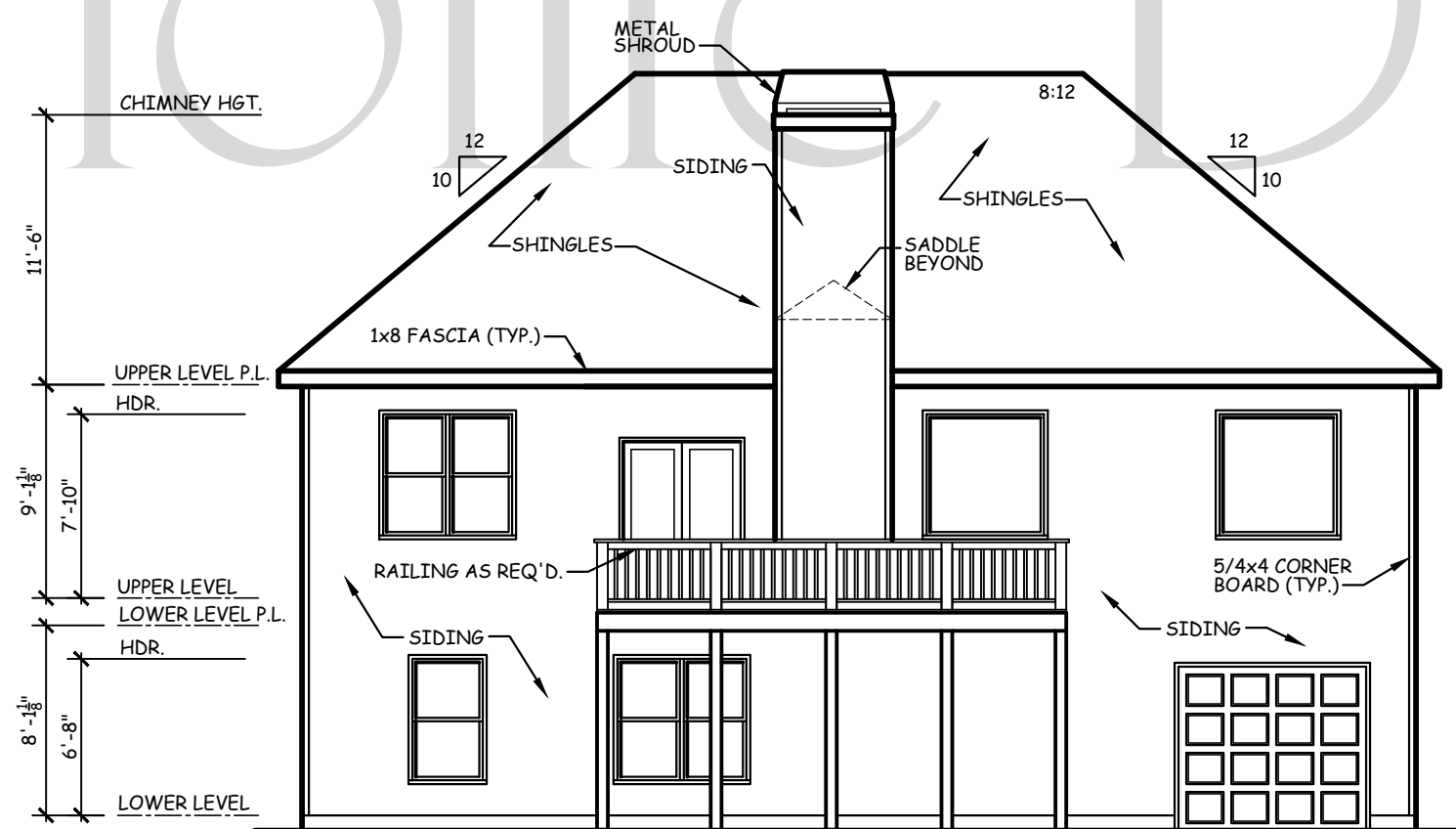


1 LEFT ELEVATION
A1.2 SCALE: 1/8" = 1'-0"

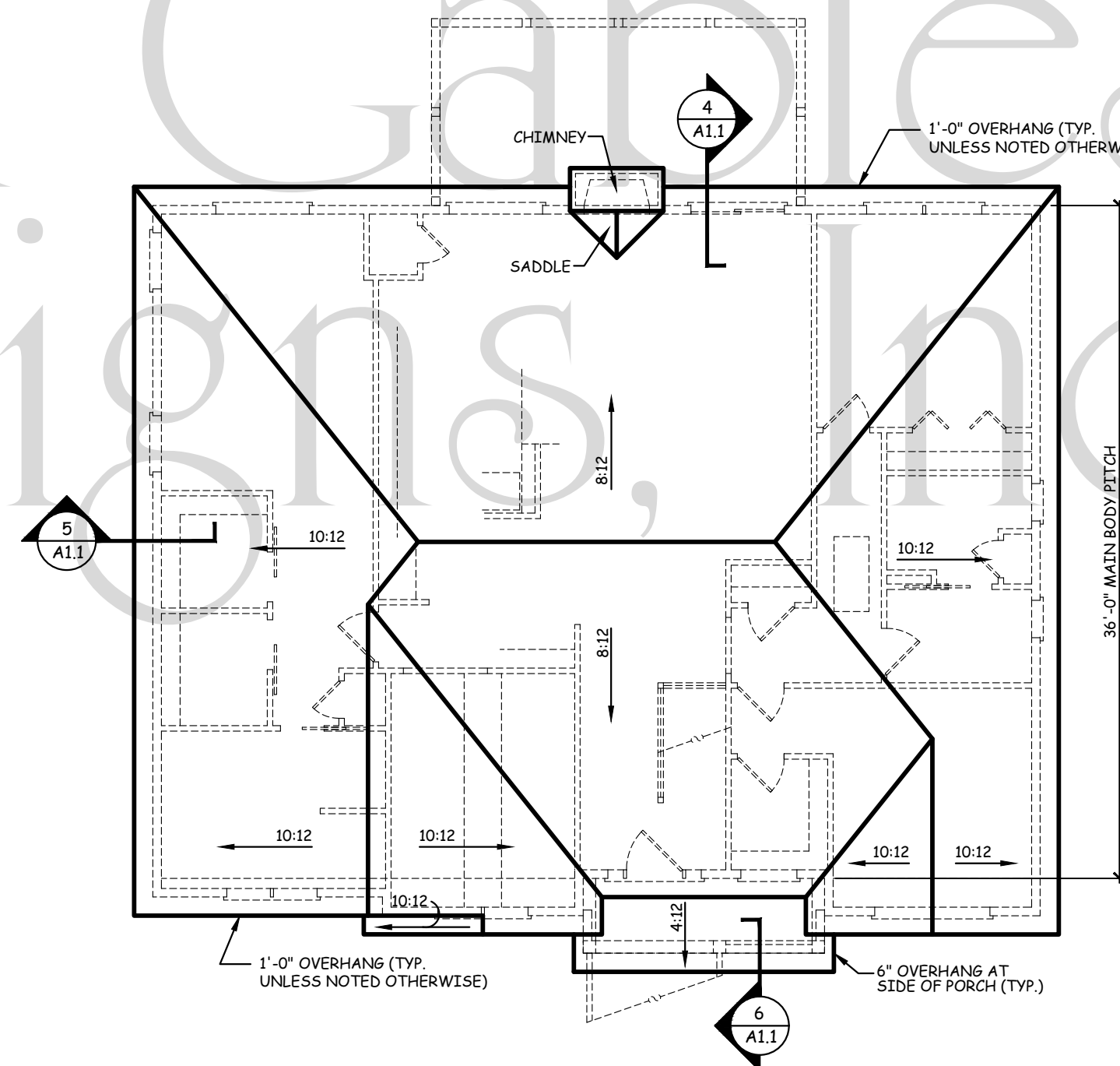


2 RIGHT ELEVATION
A1.2 SCALE: 1/8" = 1'-0"

- NOTE:
1. WHEN TWO ROOFS INTERSECT WITH DIFFERENT ROOF PITCHES, ADD BLOCKING TO STEEPER PITCH AS REQUIRED TO LINE UP FASCIAS AT A MINIMUM OF 1'-0" OVERHANG.
 2. ELEVATIONS REFLECT A BASEMENT FOUNDATION. IF ANOTHER FOUNDATION IS USED, BUILDER SHOULD DISREGARD FOUNDATION SHOWN.
 3. PROVIDE ATTIC VENTILATION PER LOCAL CODES AND REQUIREMENTS.
 4. FOUNDATION WALLS, RETAINING WALLS, BASEMENT WINDOWS AND DOORS ARE SUBJECT TO CHANGE DUE TO CHANGING SITE CONDITIONS.



3 REAR ELEVATION
A1.2 SCALE: 1/8" = 1'-0"



4 ROOF PLAN
A1.2 SCALE: 1/8" = 1'-0"

AMERICAN GABLES HOME DESIGNS, INC. hereby reserves its common law copyright and other property rights in these plans, designs, arrangements and ideas. These ideas, plans and designs are not to be reproduced, changed or copied in any form or manner whatsoever, nor are they to be assigned to any third party without first obtaining the express written permission from AMERICAN GABLES HOME DESIGNS, INC.

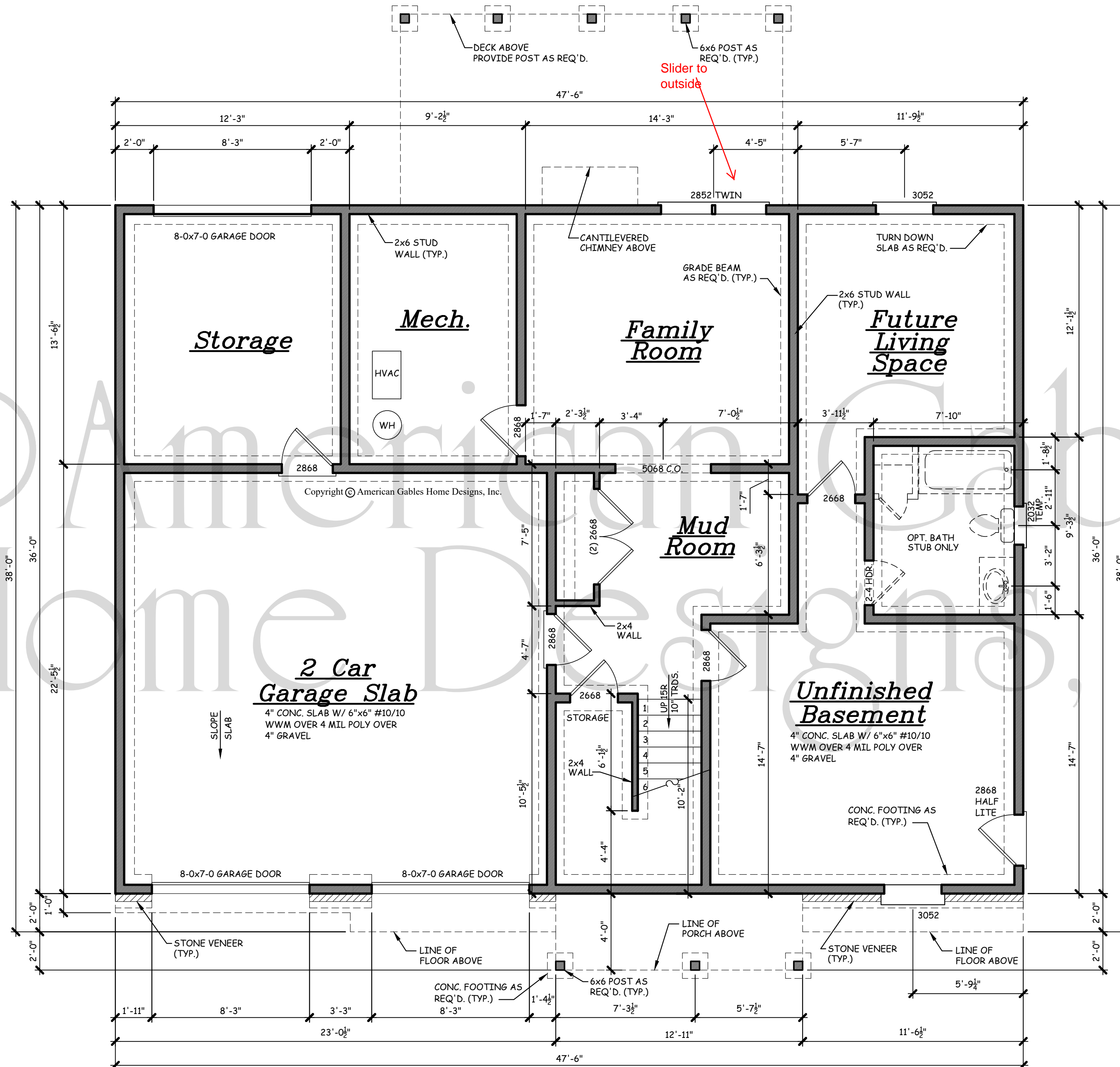
DAYTON
SIDE & REAR ELEVATIONS/
ROOF PLAN

American Gables
HOME DESIGNS, INC.
1230 Johnson Ferry Place * Suite J-10
Marietta, GA 30068 678-919-7717
www.AmericanGables.com

DRAWN BY: DAC
DATE: 05/08/20
REVISIONS:

SHEET

A1.2



1 LOWER LEVEL FLOOR PLAN
A2.1 SCALE: 1/4" = 1'-0"

AMERICAN GABLES HOME DESIGNS, INC. hereby reserves its common law copyright and other property rights in these plans, designs, arrangements and ideas. These ideas, plans and designs are not to be reproduced, changed or copied in any form or manner whatsoever, nor are they to be assigned to any third party without first obtaining the express written permission from AMERICAN GABLES HOME DESIGNS, INC.

DAYTON
LOWER LEVEL
FLOOR PLAN

American Gables
HOME DESIGNS, INC.
1230 Johnson Ferry Place * Suite J-10
Marietta, GA 30068 678-919-7717
www.AmericanGables.com

DRAWN BY: DAC	
DATE: 05/08/20	
REVISIONS:	

AMERICAN GABLES HOME DESIGNS, INC. hereby reserves its common law copyright and other property rights in these plans, designs, arrangements and ideas. These ideas, plans and designs are not to be reproduced, changed or copied in any form or manner whatsoever, nor are they to be assigned to any third party without first obtaining the express written permission from AMERICAN GABLES HOME DESIGNS, INC.

DAYTON
UPPER LEVEL
FLOOR PLAN

American Gables
HOME DESIGNS, INC.
1230 Johnson Ferry Place * Suite J-110
Marietta, GA 30068 678-919-7717
www.AmericanGables.com

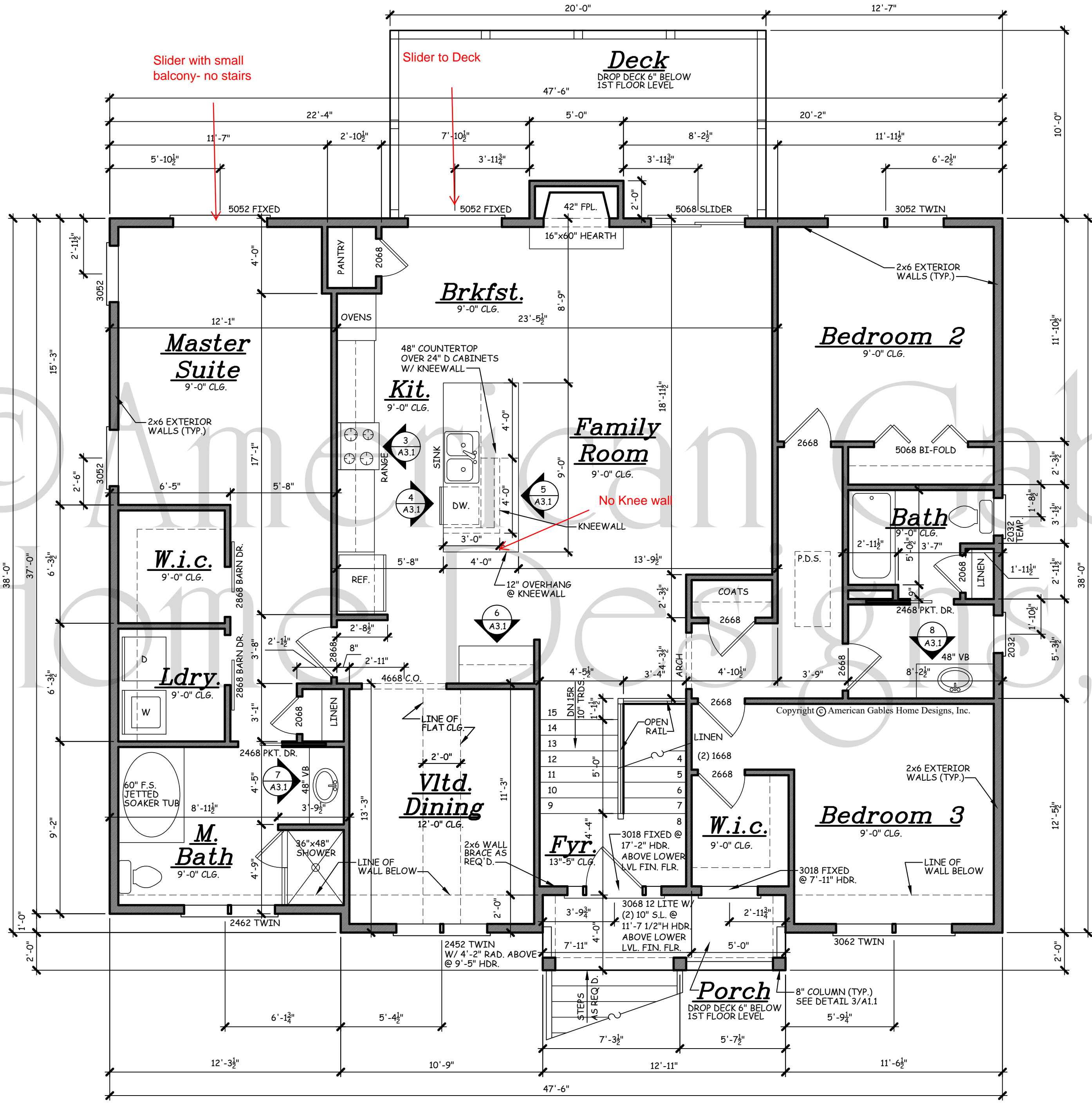
DRAWN BY: DAC
DATE: 05/08/20

REVISIONS:

- GENERAL NOTES:
1. THESE PLANS ARE DESIGNED TO MEET THE 2018 INTERNATIONAL RESIDENTIAL CODE FOR ONE AND TWO FAMILY DWELLINGS WITH THE 2020 GEORGIA STATE AMENDMENTS.
 2. BUILDER IS RESPONSIBLE TO SEE THAT THE HOUSE IS BUILT IN STRICT COMPLIANCE WITH CITY, COUNTY, STATE AND FEDERAL CODES IN THE AREA THE HOUSE IS TO BE CONSTRUCTED.
 3. BUILDER MUST VERIFY ALL DIMENSIONS PRIOR TO CONSTRUCTION AND REPORT ANY DISCREPANCIES TO AMERICAN GABLES HOME DESIGNS, INC. FOR JUSTIFICATION AND/OR CORRECTIONS. BUILDER SHALL ASSUME RESPONSIBILITY FOR ERRORS THAT ARE NOT REPORTED.
 4. ALL DIMENSIONS SHOULD BE READ OR CALCULATED AND NEVER SCALED.
 5. THESE PLANS ARE NOT TO BE COPIED OR REPRODUCED IN ANY FORM WITHOUT THE EXPRESS WRITTEN PERMISSION OF AMERICAN GABLES HOME DESIGNS, INC.
 6. ALL LOAD BEARING WALLS, BEAM SUPPORTS AND RAFTER BRACING SHOULD CARRY LOAD THRU ALL LEVELS TO FOUNDATION AND BE SUPPORTED BY GRADE BEAMS OR FOOTINGS DESIGNED TO CARRY LOADS.
 7. ALL ANGLED WALLS ARE 45° UNLESS NOTED OTHERWISE.
 8. ALL STRUCTURAL BEAMS AND WALLS ARE TO BE DESIGNED BY A LOCAL STRUCTURAL ENGINEER AND MEET ALL LOCAL CODES.
 9. FLOOR AND ROOF TRUSS DRAWINGS MUST BE PROVIDED BY TRUSS MANUFACTURER. PLUMBING AND HVAC PLANS SHOULD BE PROVIDED BY A LOCAL CONTRACTOR.
 10. SQUARE FOOTAGE CALCULATIONS ARE MADE FROM OUTSIDE OF EXTERIOR FRAME WALL AND INCLUDE FINISHED AREAS ONLY. AREAS NOT INCLUDED ARE DECKS, PORCHES, GARAGES, BASEMENTS, ATTICS, FIREPLACES, ETC. TWO STORY, VAULTED AREAS AND STAIRS ARE COUNTED ONCE IN THE FIRST FLOOR SQUARE FOOTAGE CALCULATIONS. BRICK IS NOT COUNTED IN OUR SQUARE FOOTAGE CALCULATIONS.
 11. AMERICAN GABLES HOME DESIGNS, INC. ASSUMES NO LIABILITY FOR ANY CHANGES OR MODIFICATIONS MADE TO THESE PLANS BY OTHERS.
 12. THESE PLANS ARE PROTECTED BY COPYRIGHT. REPRODUCTION OF THE HOUSE PLANS, EITHER IN WHOLE OR PART, INCLUDING ANY FORM OF COPYING AND/OR PREPARATION OF DERIVATIVE WORKS THERE OF, FOR ANY REASON WITHOUT PRIOR WRITTEN PERMISSION BY AMERICAN GABLES HOME DESIGNS, INC. IS STRICTLY PROHIBITED.

- NOTE:
1. SET FIRST FLOOR WINDOW HEADERS AT 7'-10" A.F.F. UNLESS OTHERWISE NOTED
 2. ALL EXTERIOR WALLS TO BE 2x6

SQUARE FOOTAGE	
UPPER LEVEL	1,767 SQ. FT.
LOWER LEVEL	341 SQ. FT.
TOTAL	2,108 SQ. FT.
PORCH	52 SQ. FT.
GARAGE	497 SQ. FT.



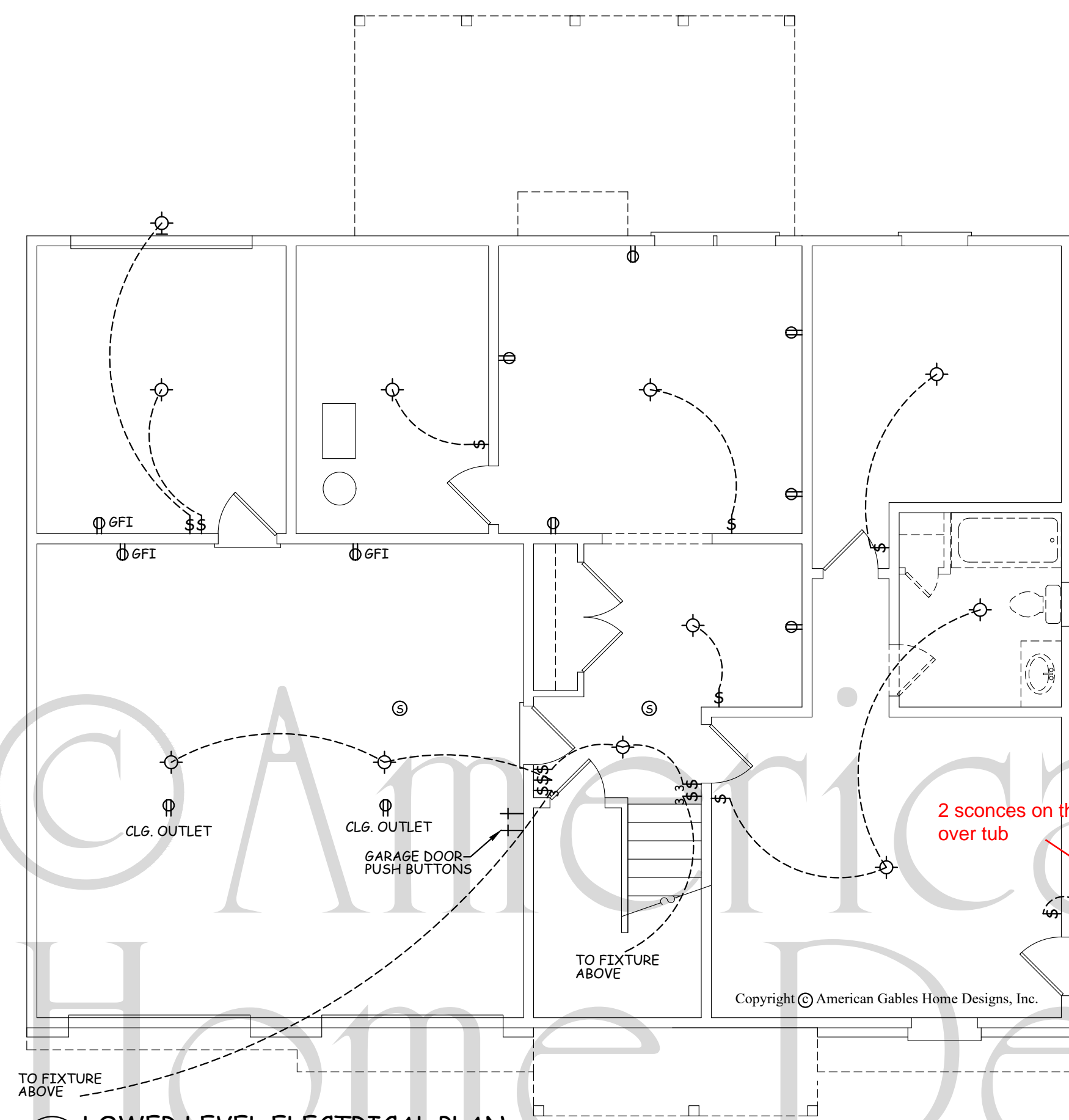
1 UPPER LEVEL FLOOR PLAN
A2.2 SCALE: 1/4" = 1'-0"

AMERICAN GABLES HOME DESIGNS, INC. hereby reserves its common law copyright and other property rights in these plans, designs, arrangements and ideas. These ideas, plans and designs are not to be reproduced, changed or copied in any form or manner whatsoever, nor are they to be assigned to any third party without first obtaining the express written permission from AMERICAN GABLES HOME DESIGNS, INC.

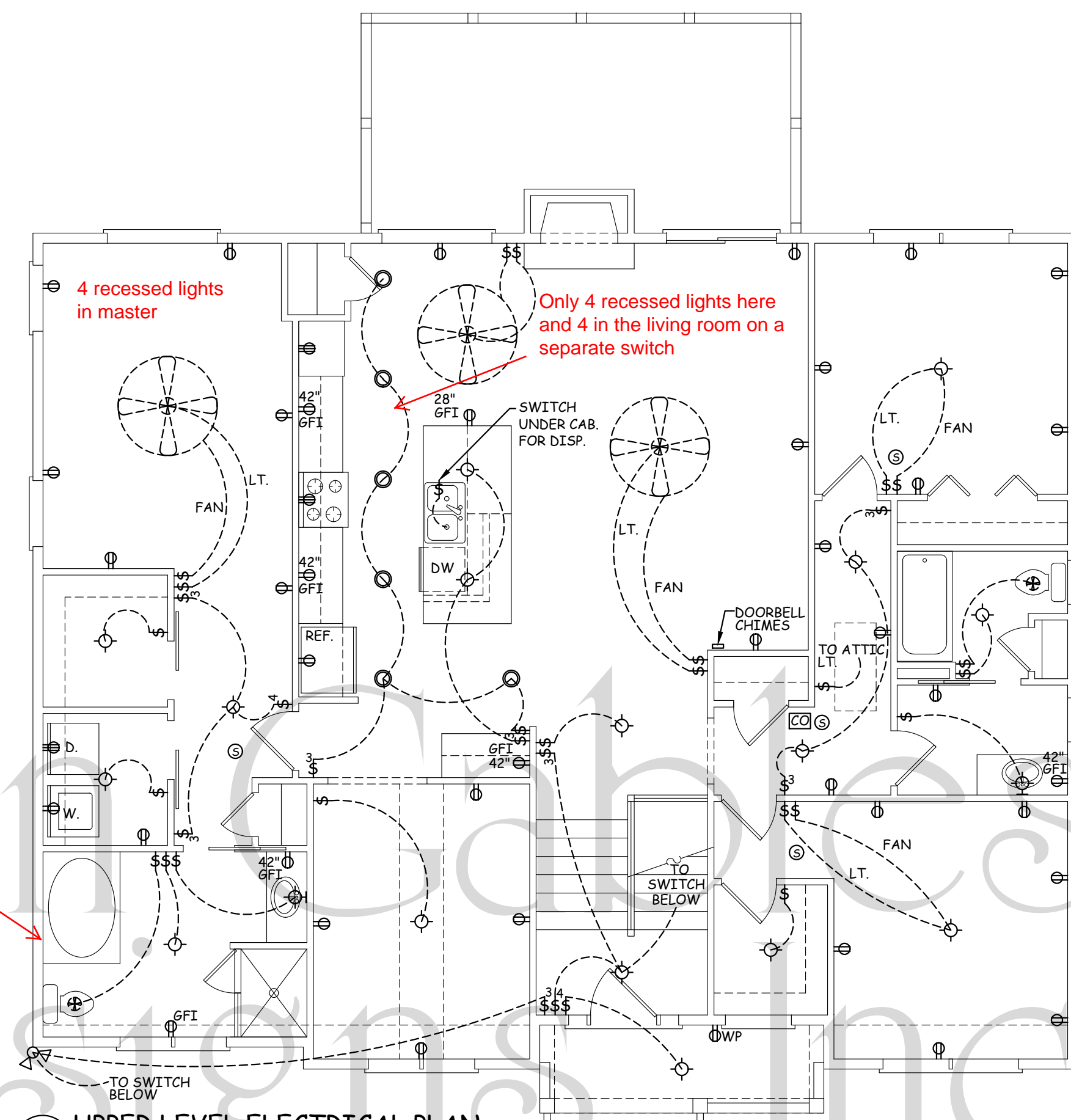
DAYTON
ELECTRICAL PLANS /
INTERIOR ELEVATIONS

American Gables
HOME DESIGNS, INC.
1230 Johnson Ferry Place * Suite J-10
Marietta, GA 30068 678-919-7717
www.AmericanGables.com

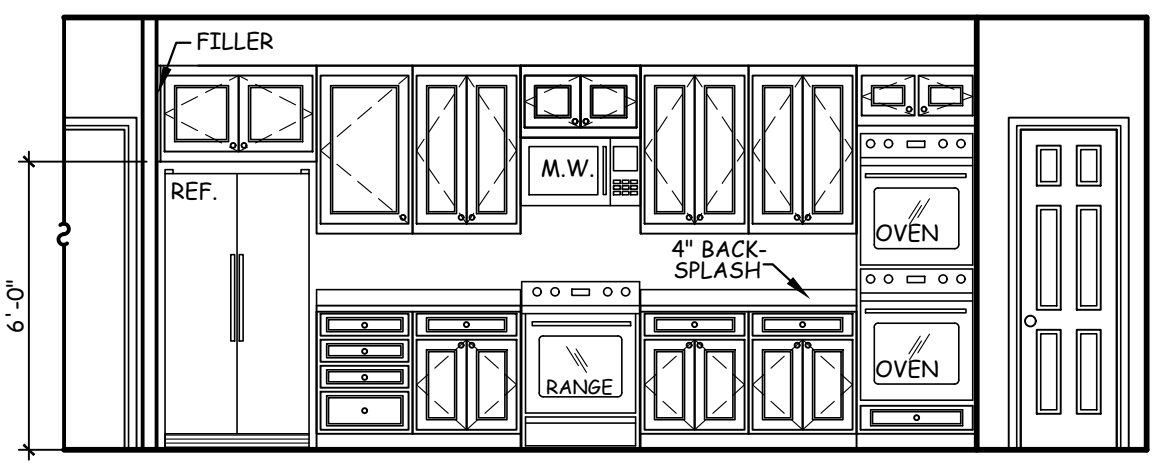
DRAWN BY: DAC
DATE: 05/08/20
REVISIONS:



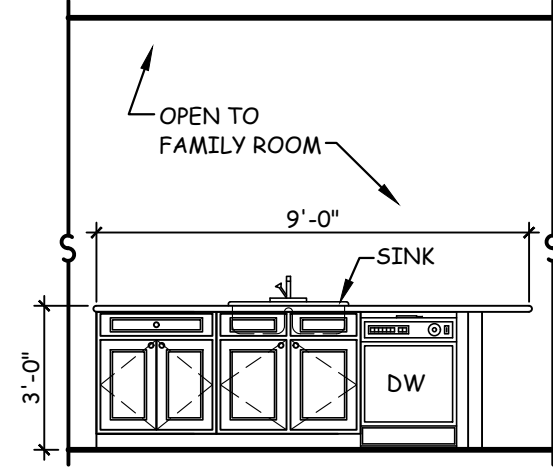
1 LOWER LEVEL ELECTRICAL PLAN
A3.1 SCALE: 3/16" = 1'-0"



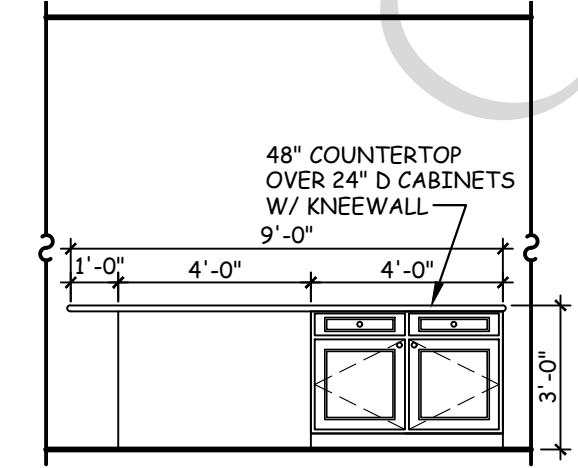
2 UPPER LEVEL ELECTRICAL PLAN
A3.1 SCALE: 3/16" = 1'-0"



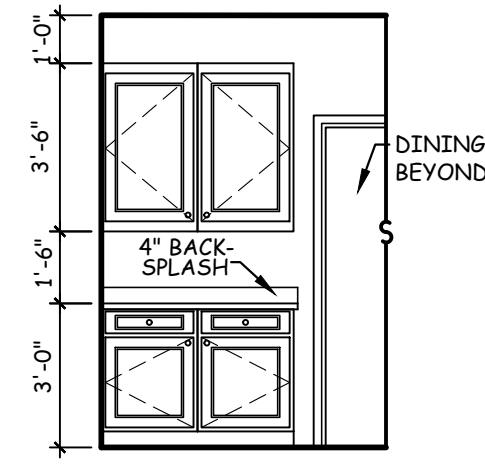
3 KITCHEN CABINETS
A3.1 SCALE: 1/4" = 1'-0"



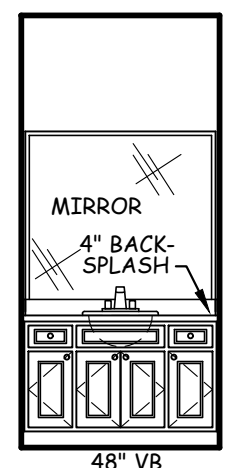
4 KITCHEN CABINETS
A3.1 SCALE: 1/4" = 1'-0"



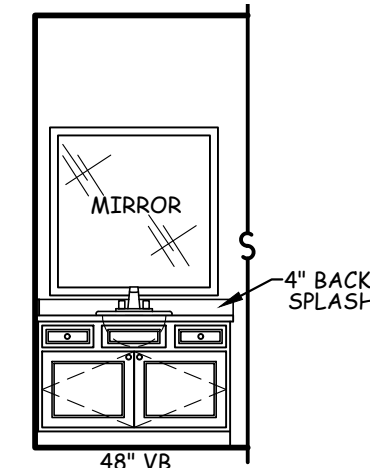
5 KITCHEN CABINETS
A3.1 SCALE: 1/4" = 1'-0"



6 KITCHEN CABINETS
A3.1 SCALE: 1/4" = 1'-0"



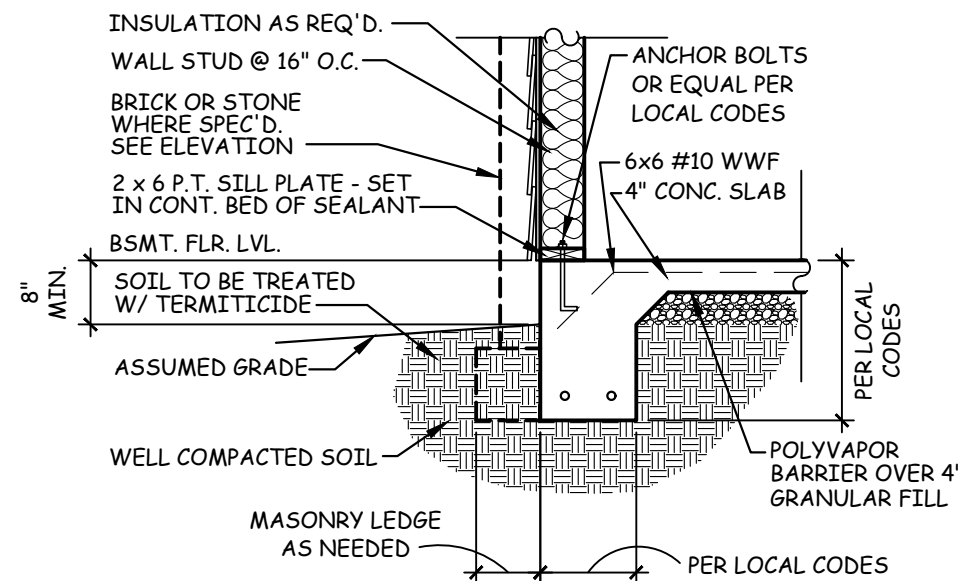
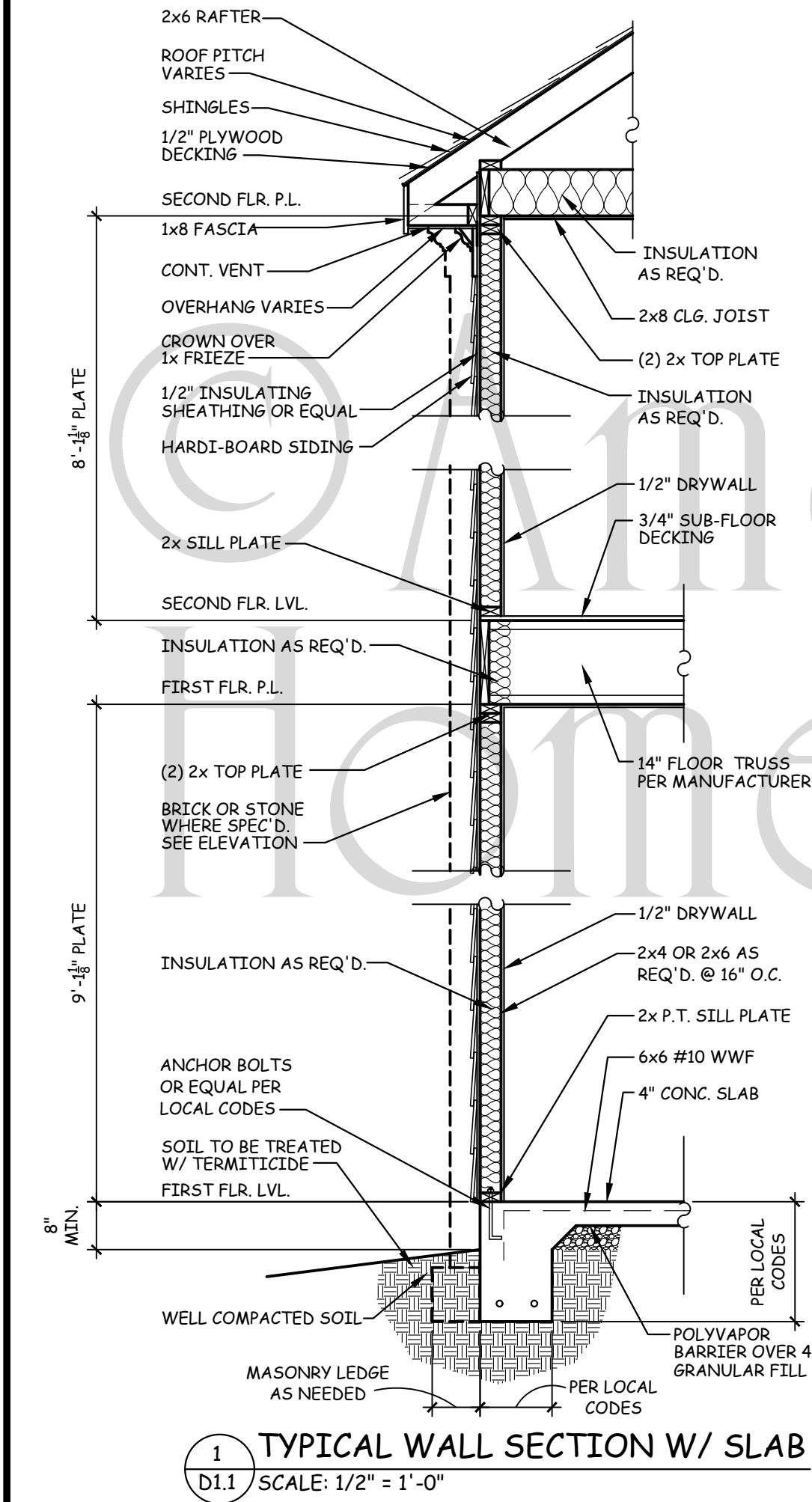
7 M. BATH CABINETS
A3.1 SCALE: 1/4" = 1'-0"



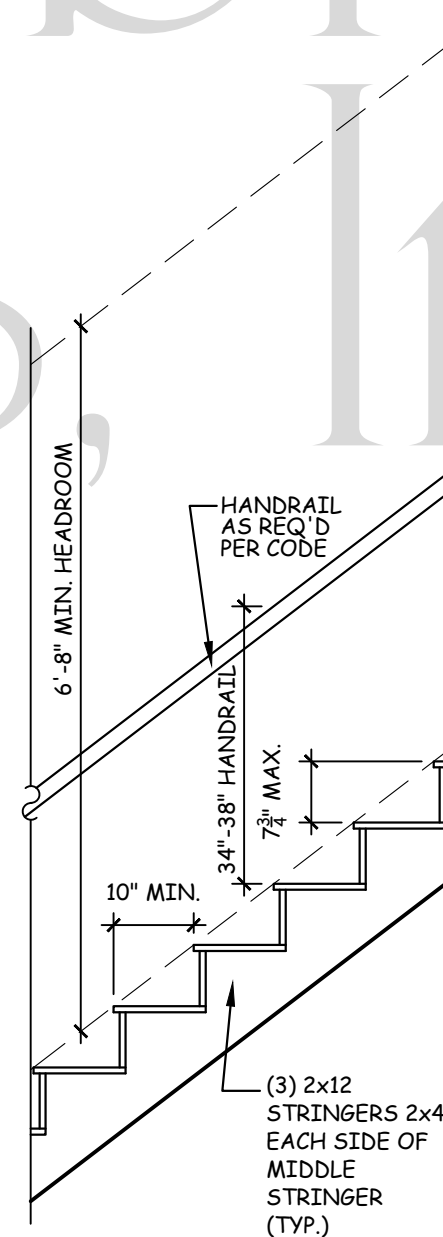
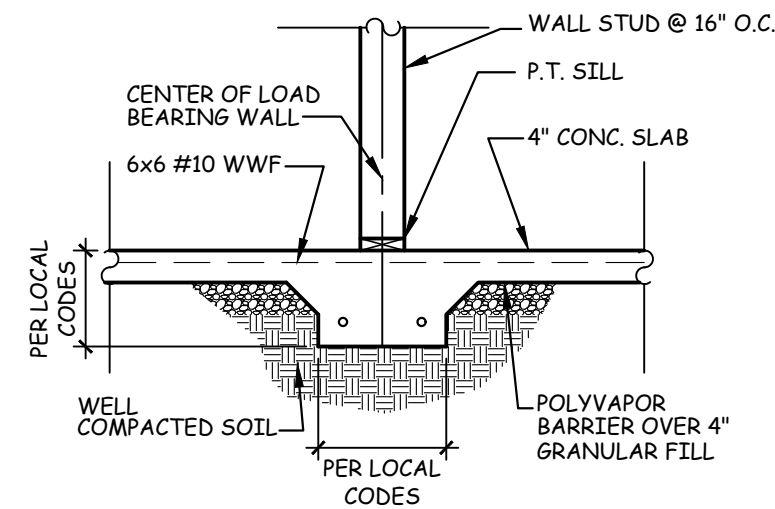
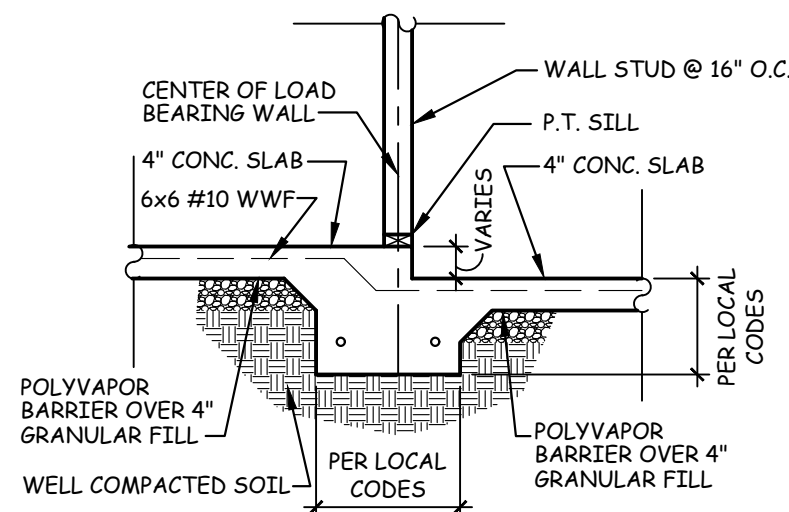
8 BATH CABINETS
A3.1 SCALE: 1/4" = 1'-0"

ELECTRICAL LEGEND			
\$	SINGLE POLE SWITCH	⊕	QUAD OUTLET
\$3	THREE-WAY SWITCH	⊕ 1/2	HALF SWITCHED OUTLET
\$4	FOUR-WAY SWITCH	⊕	FLOOR OUTLET
⊙	CEILING MTD. LIGHT FIXTURE	⊕	220 OUTLET
⊙	WALL MTD. LIGHT FIXTURE	⊕	GAS CONNECTION
⊙	RECESSED CAN LIGHT	⊕	DOORBELL CHIMES
⊙	RECESSED EYEBALL FIXTURE	⊕	SMOKE DETECTOR
⊙	FLOOD LIGHT	⊕	CARBON MONOXIDE ALARM
⊕	FLUORESCENT LIGHT	⊕	SMOKE/CO2 COMBO.
⊕	OUTAKE FAN * SEE NOTE	⊕	PUSH BUTTON
⊕	FAN / LIGHT COMBO	⊕	TELEPHONE OUTLET
⊕	110 OUTLET	⊕	CABLE OUTLET
⊕ GFI	GFCI PROTECTED 110 OUTLET	⊕	CAT 5 INTERNET
⊕ WP	WEATHER PROOF 110 OUTLET	⊕	CEILING FAN

NOTES:
1. VENT FANS TO COMPLY WITH IRC R303.3 EXCEPTION
2. ALL AFCI CIRCUIT BREAKERS TO BE INSTALLED AS PER 2017 NEC REQUIREMENTS.



GENERAL NOTES:
1. THESE PLANS ARE DESIGNED TO MEET THE 2018 INTERNATIONAL RESIDENTIAL CODE FOR ONE AND TWO FAMILY DWELLINGS WITH THE 2020 GEORGIA STATE AMENDMENTS.
2. BUILDER IS RESPONSIBLE TO SEE THAT THE HOUSE IS BUILT IN STRICT COMPLIANCE WITH CITY, COUNTY, STATE AND FEDERAL CODES IN THE AREA THE HOUSE IS TO BE CONSTRUCTED.
3. AMERICAN GABLES HOME DESIGNS, INC. ASSUMES NO LIABILITY FOR ANY CHANGES OR MODIFICATIONS MADE TO THESE PLANS BY OTHERS.
4. CONCRETE REINFORCEMENT SHOWN TO BE SIZED PER LOCAL CODE REQUIREMENTS OR CONTACT A STRUCTURAL ENGINEER FOR PROPER SPECIFICATIONS.



Copyright © American Gables Home Designs, Inc.

AMERICAN GABLES HOME DESIGNS, INC. hereby reserves its common law copyright and other property rights in these plans, designs, arrangements and ideas. These ideas, plans and designs are not to be reproduced, changed or copied in any form or manner whatsoever, nor are they to be assigned to any third party without first obtaining the express written permission from AMERICAN GABLES HOME DESIGNS, INC.

DETAIL SHEET
TYPICAL SLAB DETAILS

American Gables HOME DESIGNS, INC.
1230 Johnson Ferry Place * Suite J-10
Marietta, GA 30068 678-919-7717
www.AmericanGables.com

DRAWN BY:	AMH
DATE:	06/23/14
REVISIONS:	
02/17/20	