

TABLE OF CONTENTS

GENERAL NOTES	PAGE 1
TYPICAL ELEVATIONS W/ HORZ. PANELS	PAGE 2
VERTICAL PANEL CONNECTION DETAILS	PAGE 3
INTERIOR FRAME AND SIDE FRAME SECTIONS	PAGE 4
END AND SIDE FRAMING ELEVATIONS	PAGE 5
INTERIOR FRAME CORNER AND HEADER DETAILS	PAGE 6
CONNECTION AND BASE DETAILS	PAGE 7
ANCHORAGE DETAIL	PAGE 8

DRAWN BY: ART

EB CARPORTS &
METAL STRUCTURES, INC.

TABLE OF CONTENTS

DATE: 07/2022

ALL TYPES

SCALE: NTS

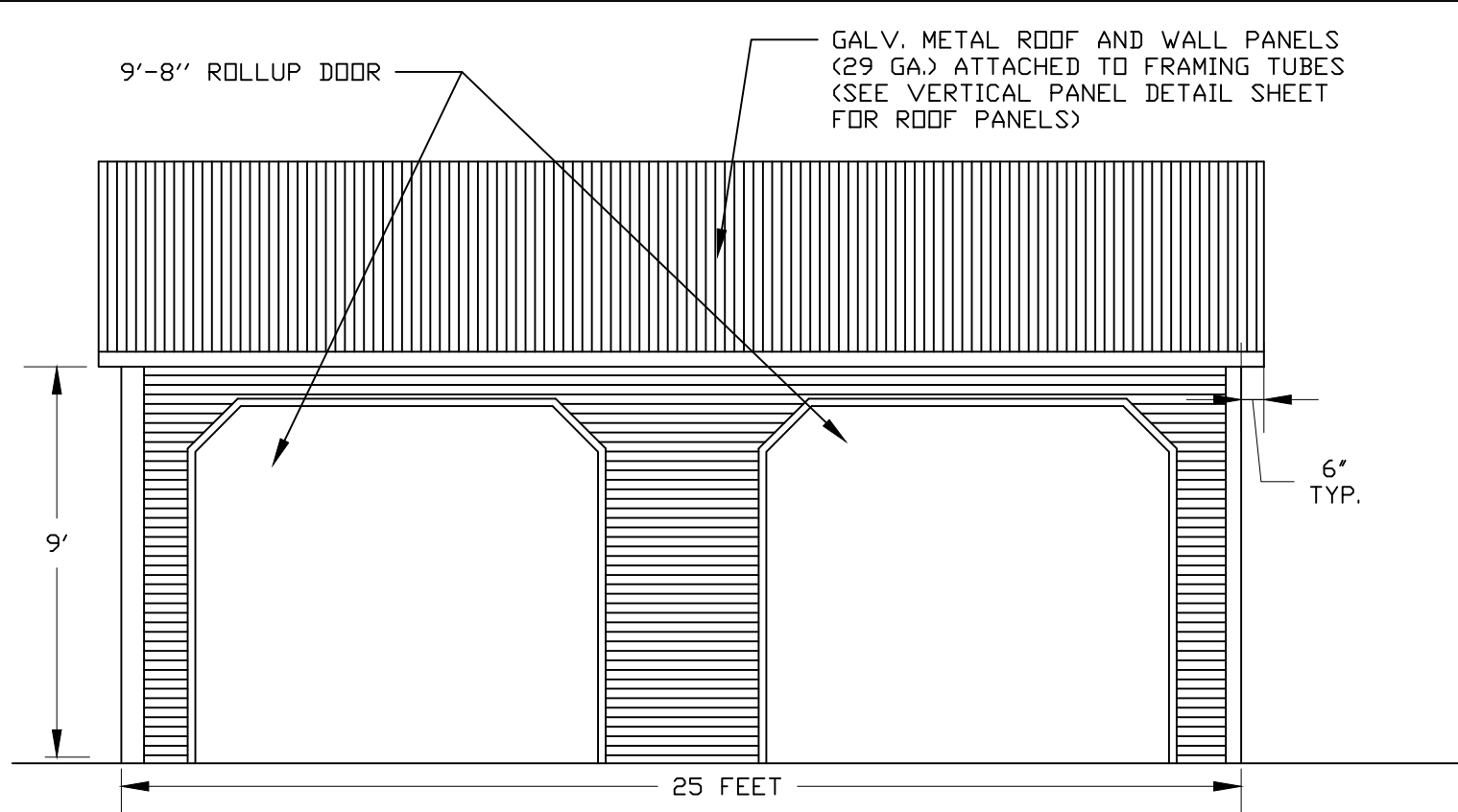
DESIGN PARAMETERS

- DESIGN PACKAGE INTENDED FOR ENCLOSED STRUCTURE WITH WIDTH OF 24 FEET AND EAVE HEIGHT OF 9 FEET.
- DESIGN IN ACCORDANCE WITH 2015 INTERNATIONAL BUILDING CODE.
- DESIGN LOADS:
 - DEAD LOAD = 15 PSF
 - LIVE LOAD = 12 PSF
 - GROUND SNOW LOAD = 65 PSF
 - MAXIMUM WIND SPEED = 130 MPH
- LOW HAZARD RISK CATEGORY I
- WIND EXPOSURE CATEGORIES B OR C

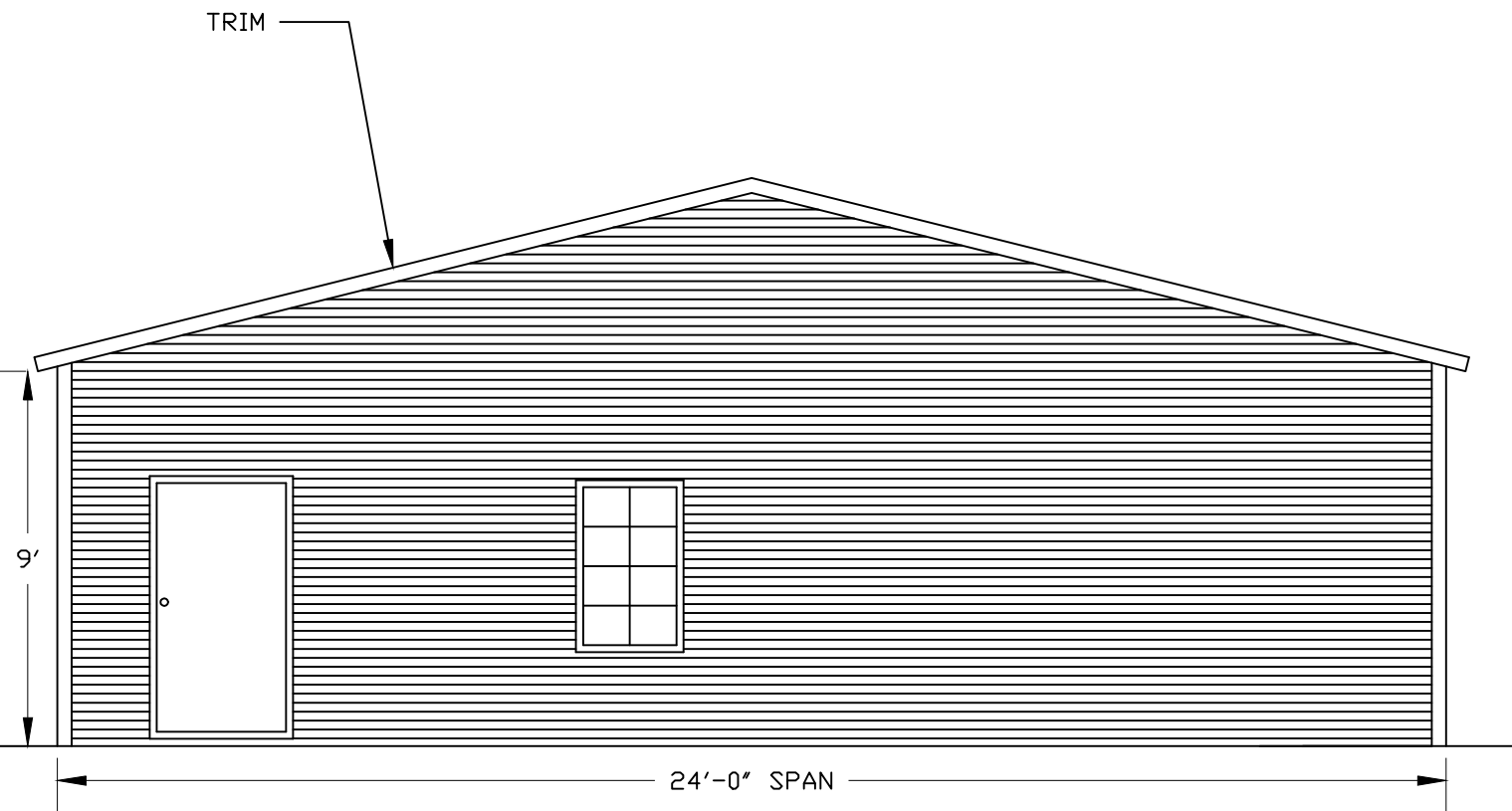
MATERIAL SPECIFICATIONS

- STEEL TUBE FRAMING MEMBERS ARE $2\frac{1}{4}" \times 2\frac{1}{4}" \times 12$ GAUGE
- STEEL CHANNEL KNEE BRACES ARE 18 GAUGE
- STEEL TUBE COLUMN REINFORCING MEMBERS ARE $2" \times 2" \times 14$ GAUGE
- ALL WELDS ARE DONE IN FABRICATION SHOP, ONLY FIELD CONNECTIONS ARE SCREW TYPE FASTENERS.
- ROOF AND WALL SHEATHING ARE 29 GAUGE METAL CORRUGATED PANELS
- FASTENERS ARE #12-14 $\times \frac{3}{4}"$ SELF-DRILLING FASTENER (SDF) WITH CONTROL SEAL WASHER ON ALL EXTERIOR FACES
- MAXIMUM FASTENER SPACING SHALL BE 10" UNLESS OTHERWISE NOTED
- GROUND ANCHORAGE: SEE GROUND ANCHORAGE DETAIL SHEET

DRAWN BY: ART	EB CARPORTS & METAL STRUCTURES, INC.	GENERAL NOTES AND SPECIFICATIONS		
DATE: 11/2020		ALL TYPES	SCALE: NTS	PAGE 1

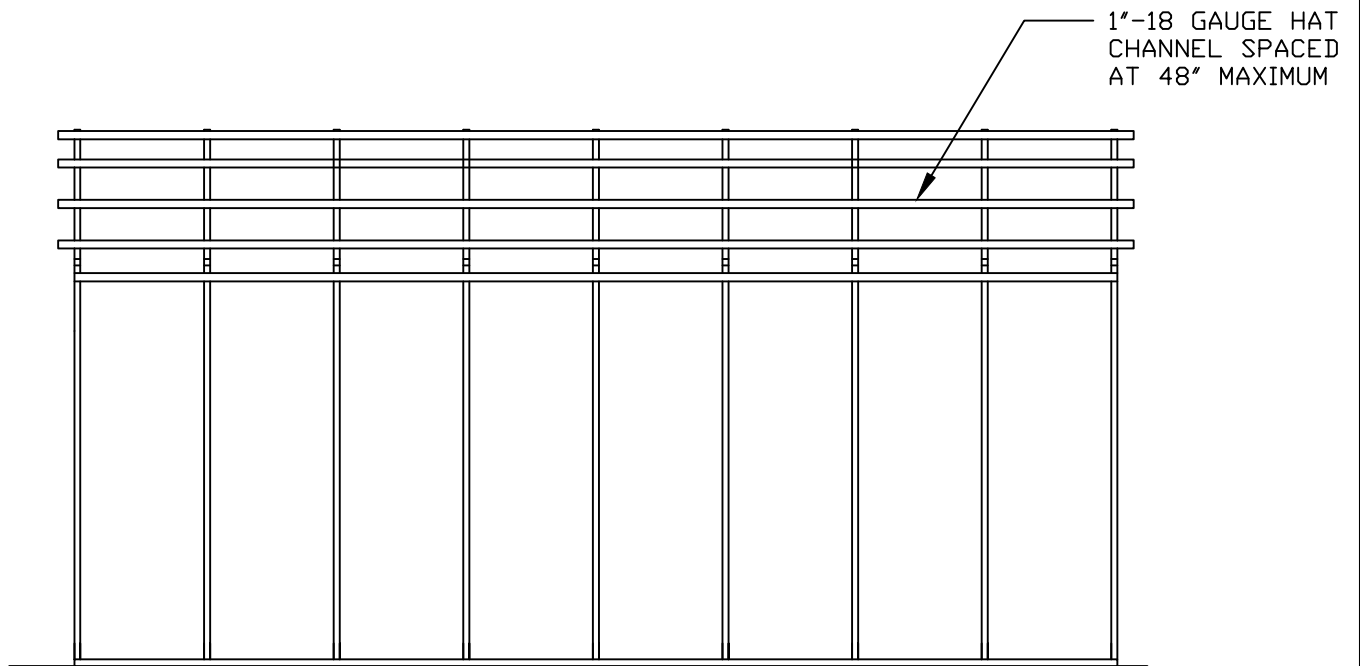


SIDE ELEVATION (OPPOSITE WITH NO OPENINGS)

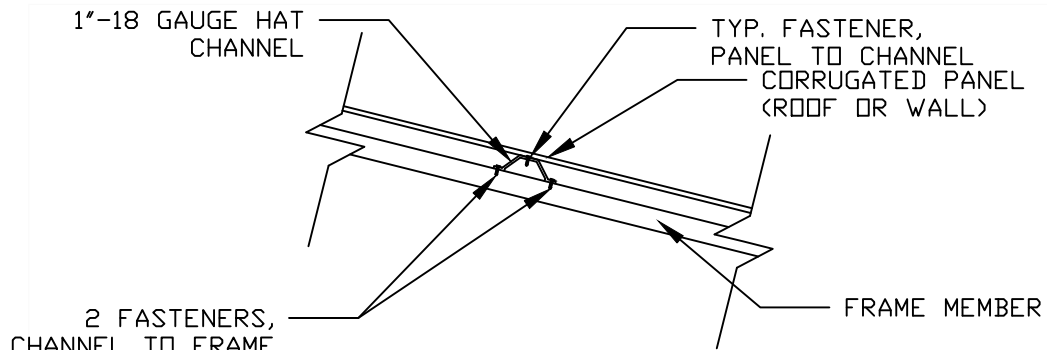


FRONT ELEVATION (REAR HAS NO DOORS)

DRAWN BY: ART	EB CARPORTS & METAL STRUCTURES, INC.	TYPICAL ELEVATIONS W/ HORZ. PANELS		
DATE: 07/2022		BOX EAVE	SCALE: NTS	PAGE 2

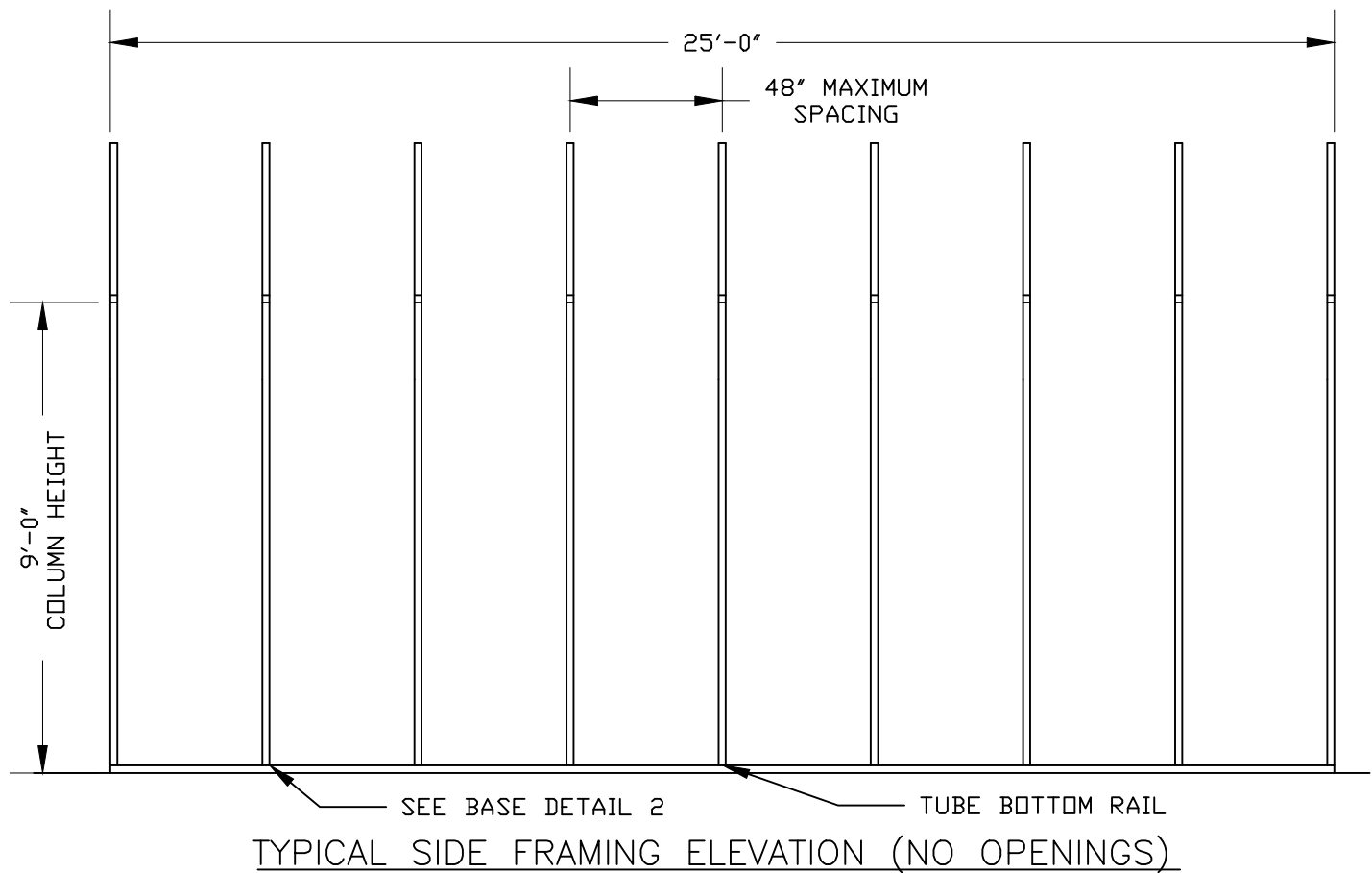
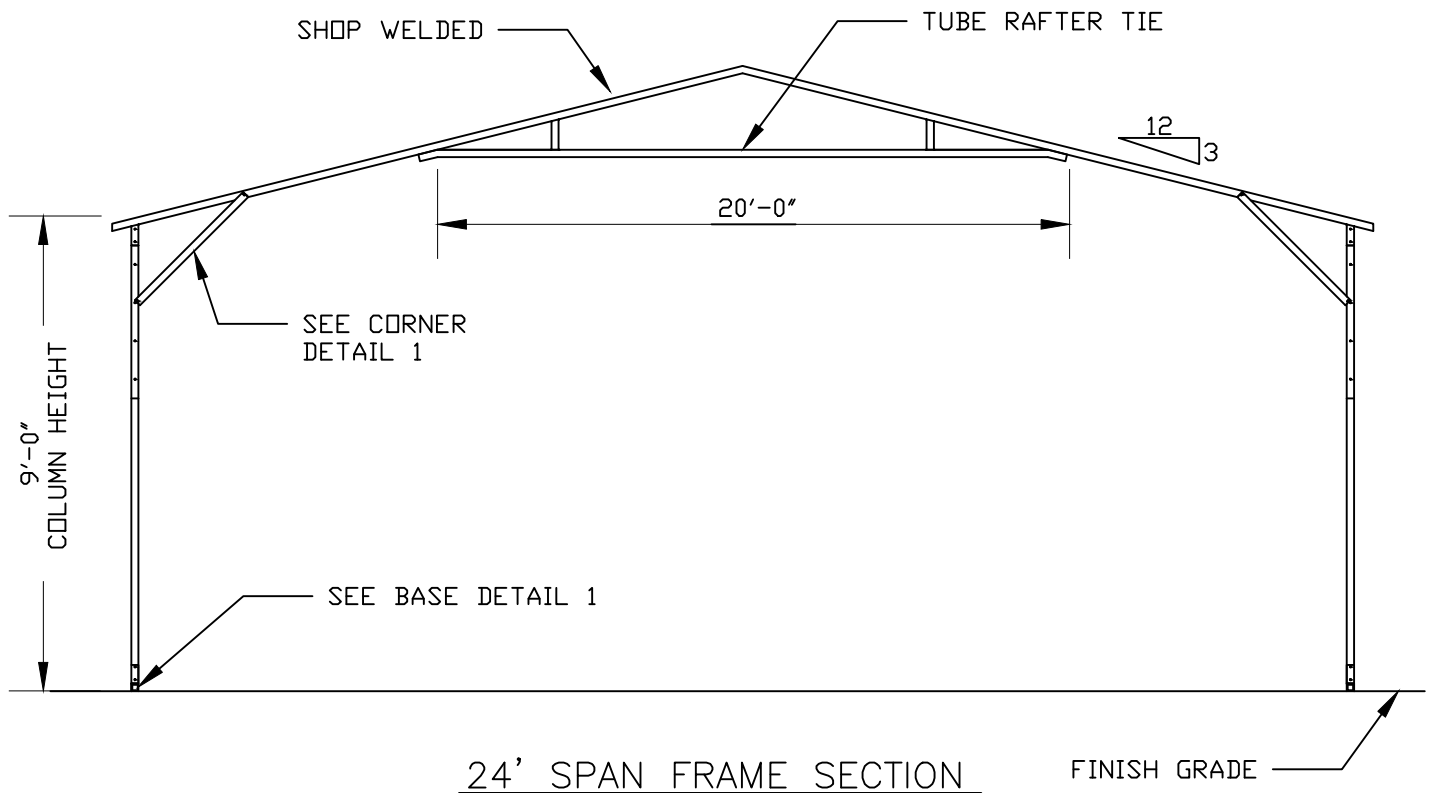


VERTICAL FRAMING SIDE ELEVATION

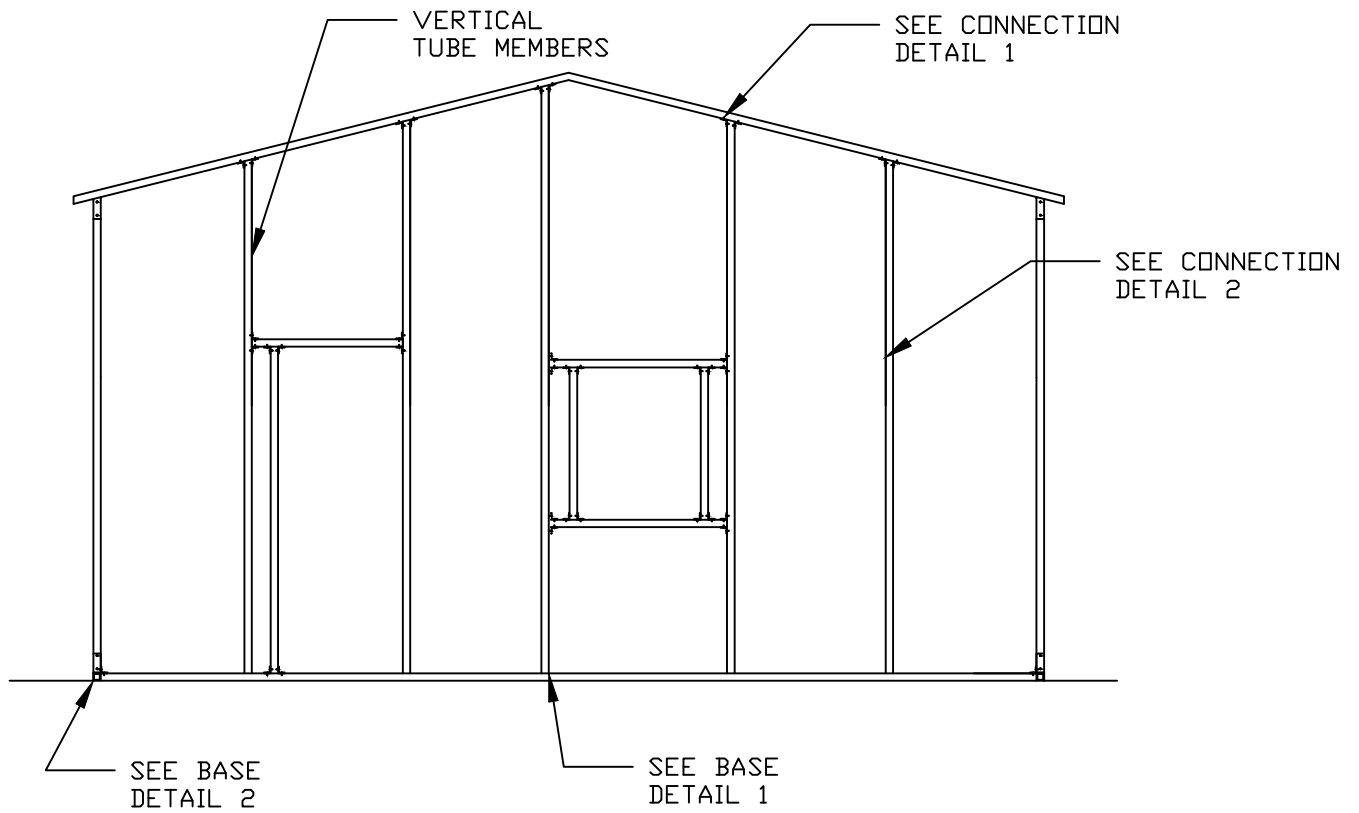


HAT CHANNEL CONNECTION DETAIL

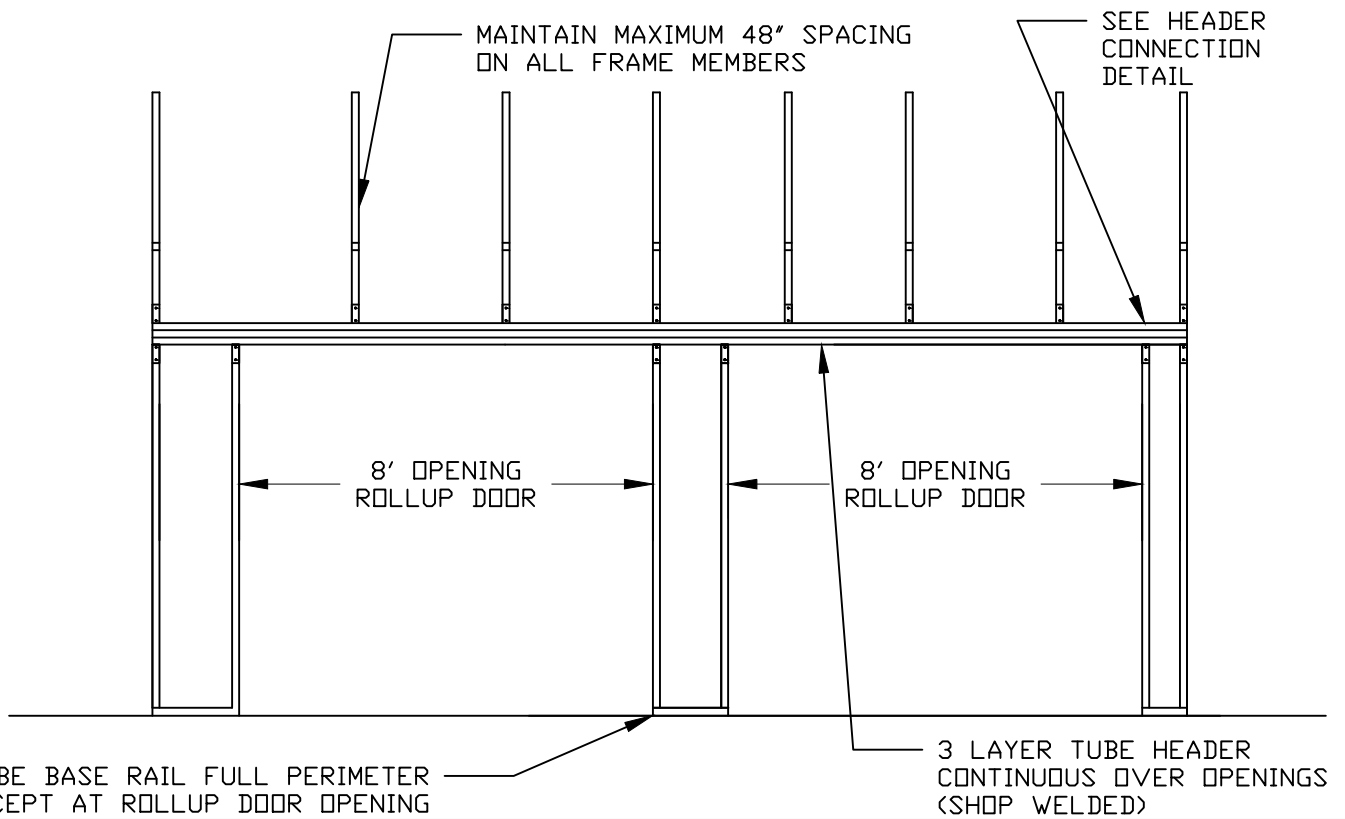
DRAWN BY: ART	EB CARPORTS & METAL STRUCTURES, INC.	VERTICAL PANEL CONNECTION DETAILS		
DATE: 07/2022		BOX EAVE	SCALE: NTS	PAGE 3



DRAWN BY: ART	EB CARPORTS & METAL STRUCTURES, INC.	INTERIOR AND SIDE FRAME SECTIONS		
		BOX EAVE	SCALE: NTS	PAGE 4
DATE: 07/2022				

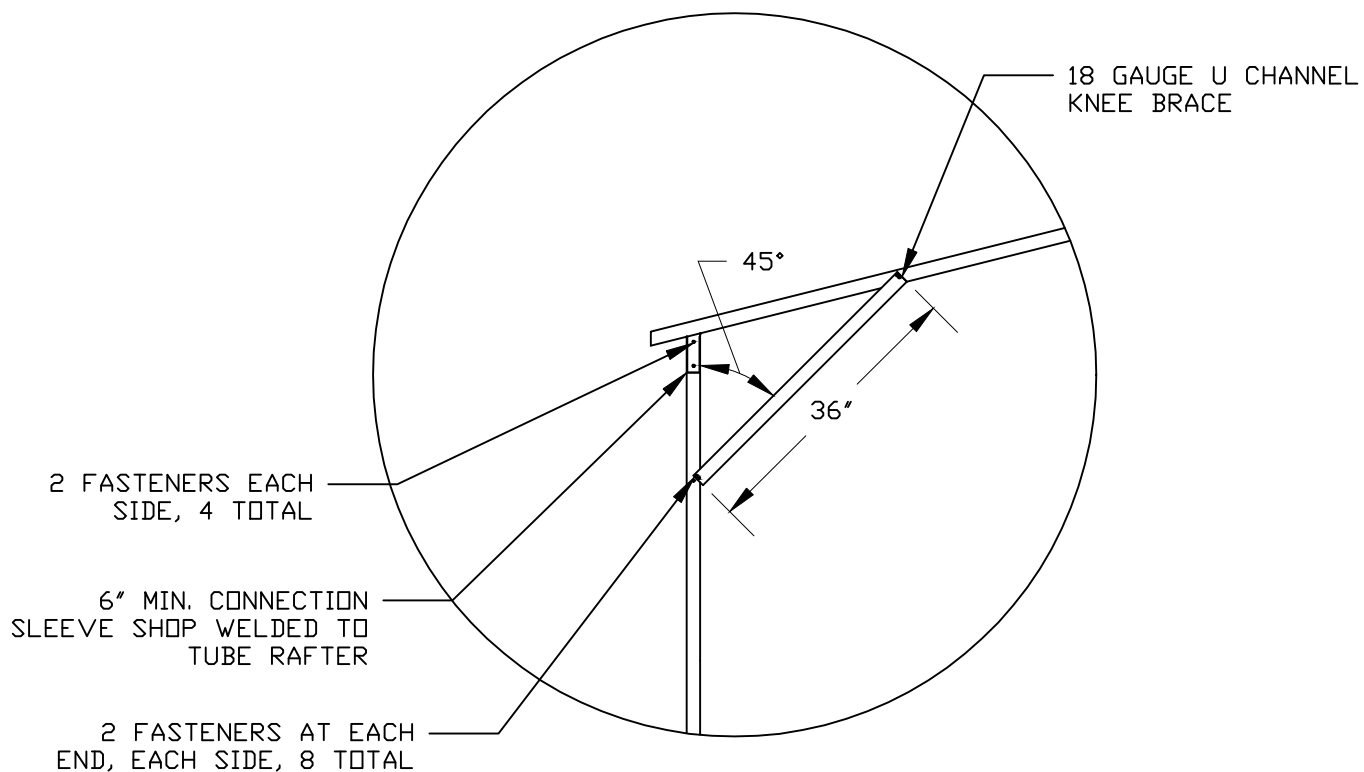


FRONT WALL FRAMING ELEVATION

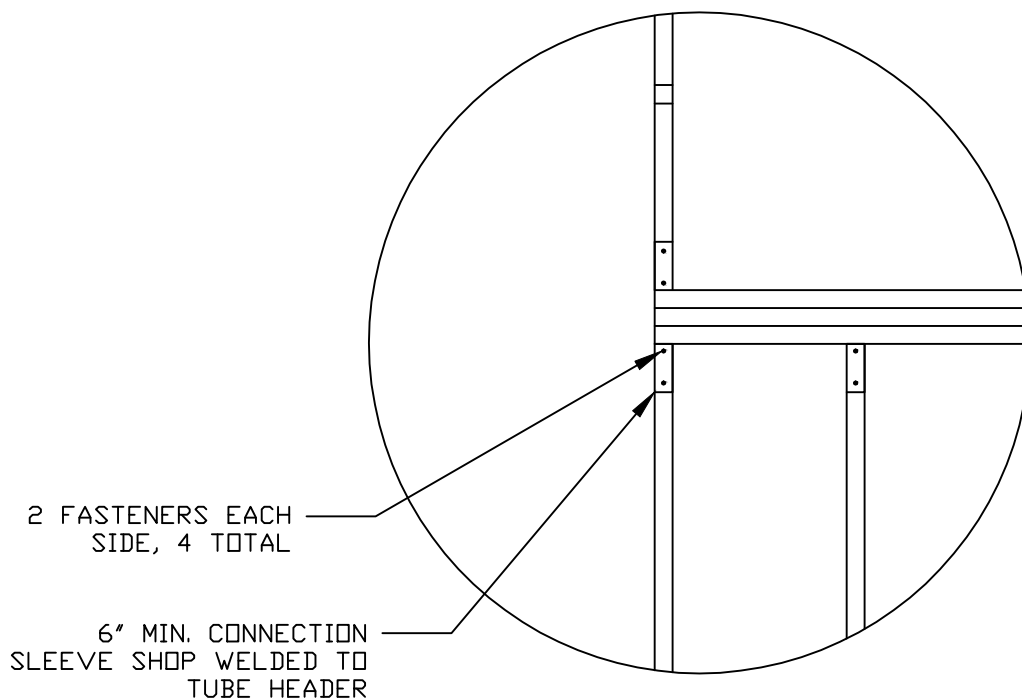


SIDE WALL OPENING FRAMING ELEVATION

DRAWN BY: ART	EB CARPORTS & METAL STRUCTURES, INC.	END WALL AND SIDE FRAMING ELEVATIONS		
DATE: 07/2022		BOX EAVE	SCALE: NTS	PAGE 5

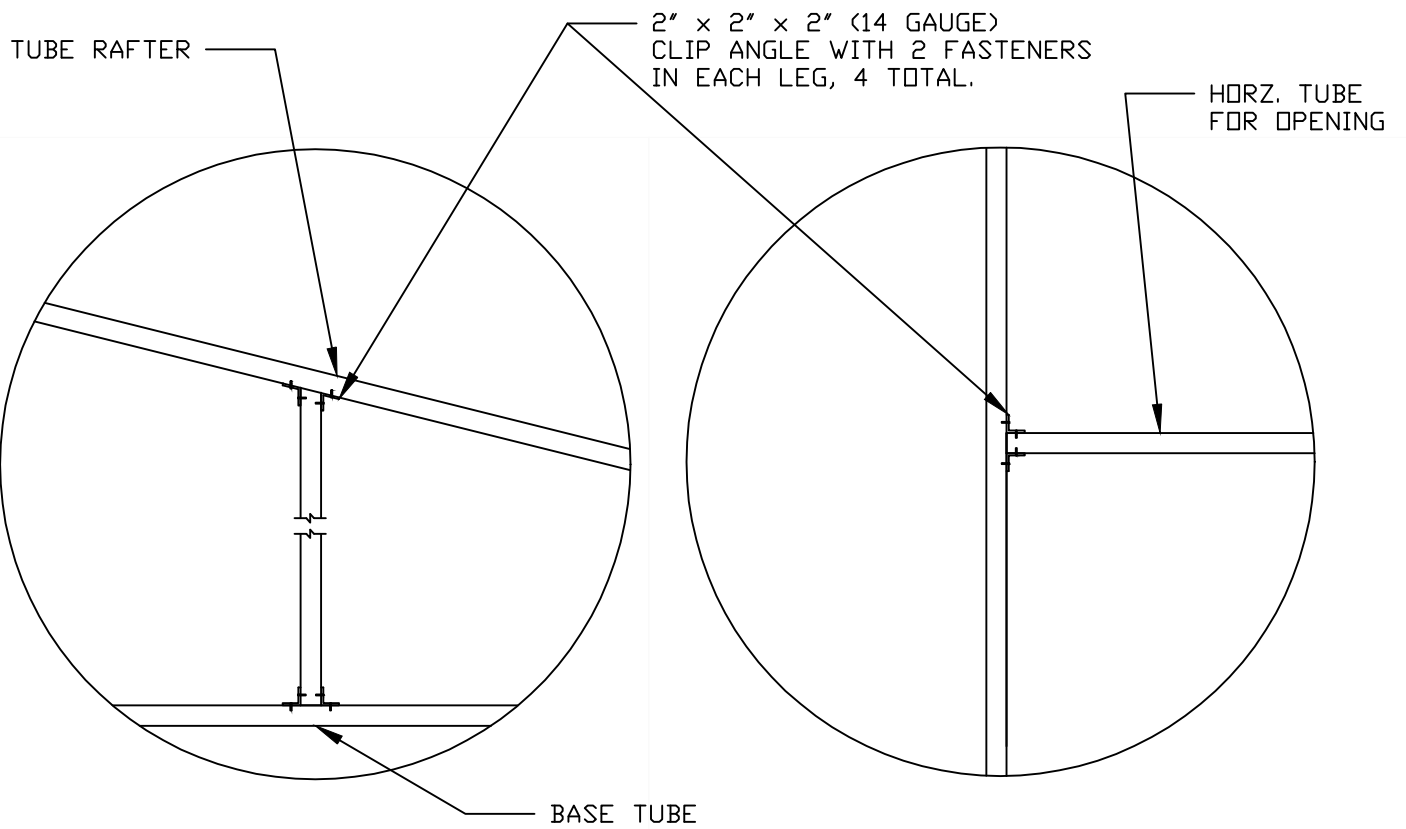


INTERIOR FRAME CORNER DETAIL 1



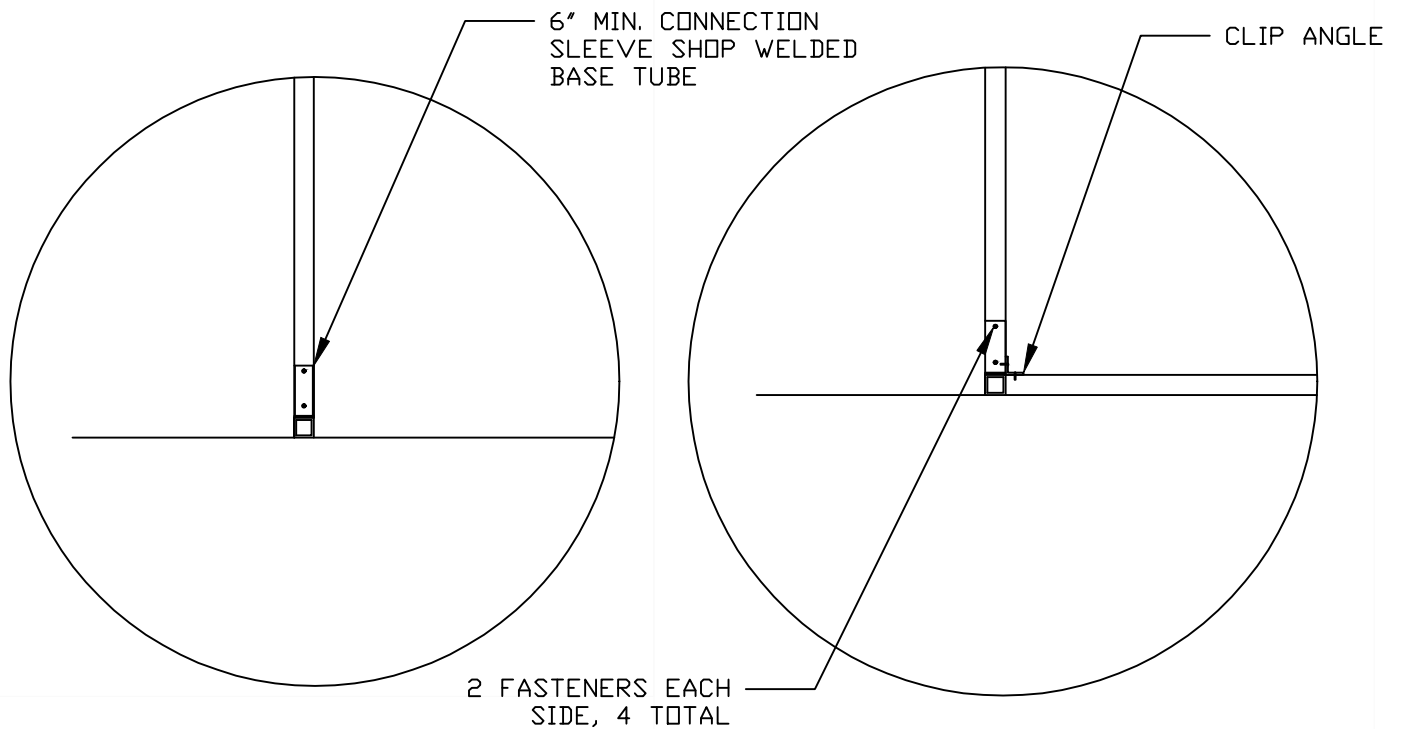
TRIPLE HEADER CONNECTION DETAIL

DRAWN BY: ART	EB CARPORTS & METAL STRUCTURES, INC.	INTERIOR CORNER AND HEADER DETAILS		
DATE: 07/2022		BOX EAVE	SCALE: NTS	PAGE 6



CONNECTION DETAIL 1

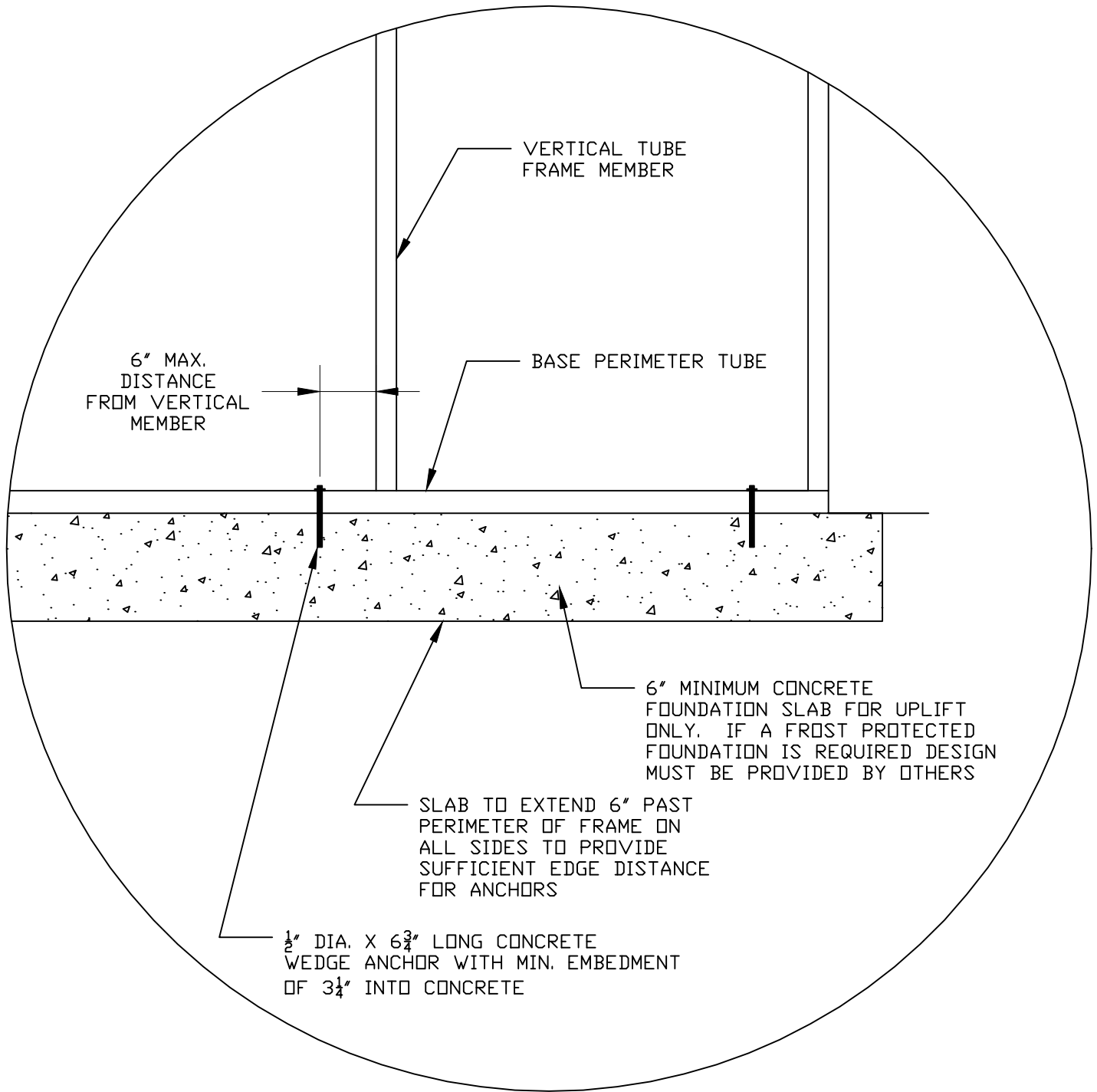
CONNECTION DETAIL 2



BASE DETAIL 1

BASE DETAIL 2

DRAWN BY: ART	EB CARPORTS & METAL STRUCTURES, INC.	CONNECTION AND BASE DETAILS		
DATE: 07/2022		BOX EAVE	SCALE: NTS	PAGE 7



ANCHORAGE DETAIL

DRAWN BY: ART	EB CARPORTS & METAL STRUCTURES, INC.	ANCHORAGE DETAIL		
DATE: 07/2022		BOX EAVE	SCALE: NTS	PAGE 8



EB Carports Inc.

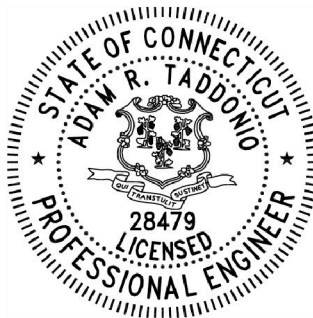
The King Of Metal Structures

EB CARPORTS AND
METAL STRUCTURES, INC.

ENCLOSED UNIT DESIGN PACKAGE

- 24'W X 26'L X 9'H
- VERTICAL STYLE ROOF
- TWO 9'X8' ROLLUP DOORS (DUTCH CORNERS)
AND ONE SWING DOOR, 3 WINDOWS

DONNA PHILLIPS
57 HENDEE ROAD
ANDOVER, CT 06232



DESIGN AND DRAFTING BY
ADAM R. TADDONIO, PE