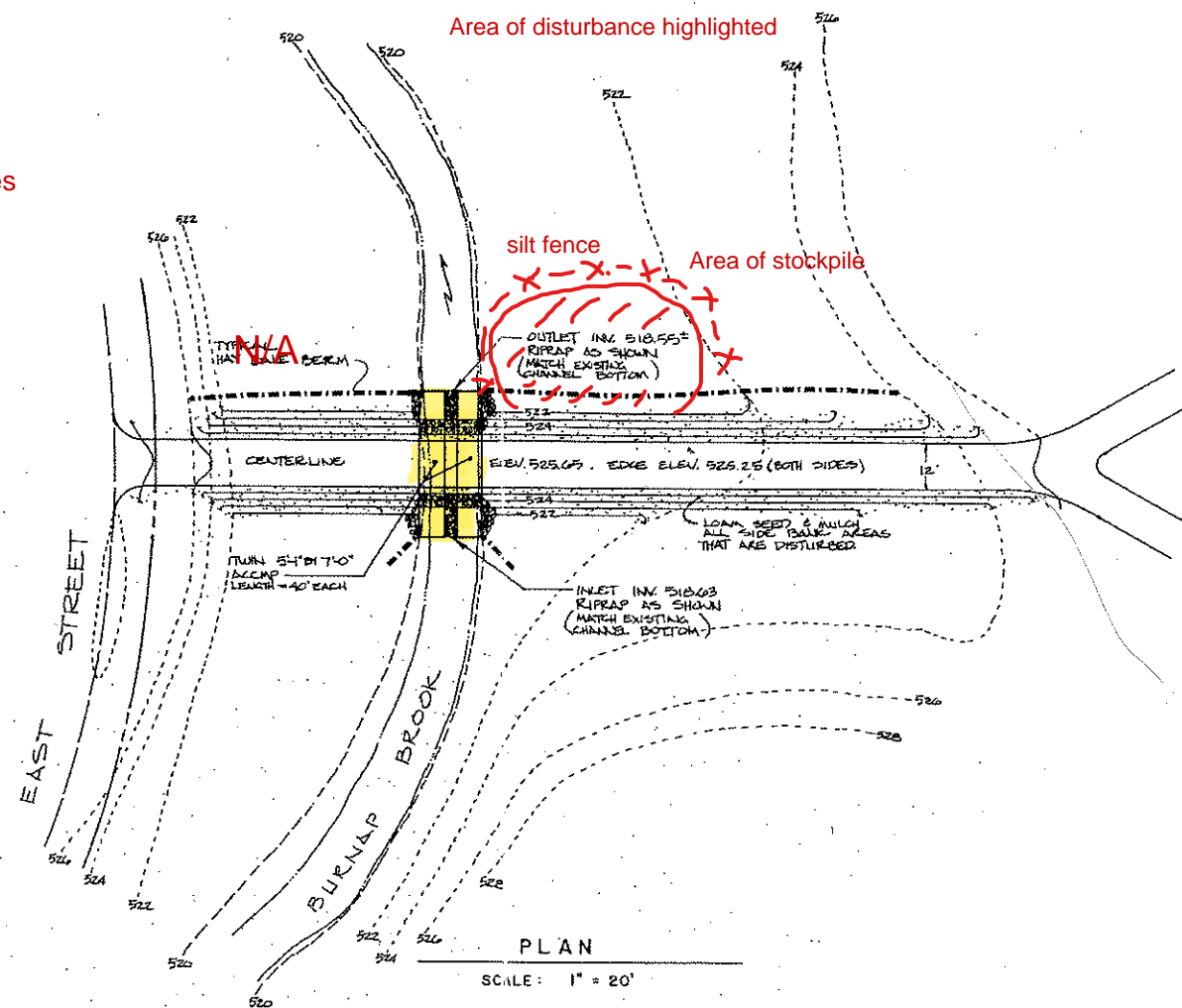


DRIVEWAY SECTION AT CULVERT

Riprap embankment both sides



ORDER OF CONSTRUCTION

1. REMOVE STONES FROM BOTTOM OF STREAM-BED, ADJUST WIDTH AND PLACE LEVELING BED OF 3/8" BROKEN STONE.
2. PLACE CULVERT PIPES AND CAREFULLY BACKFILL WITH CLEAN SILT-FREE GRAVEL. STOP BACKFILL AT THE LEVEL OF THE TOP OF BROOK BANK, AND PLACE A 12" RIPRAP THICKNESS OVER THE COMPLETED SURFACE.
3. PLACE THE HAY BALE BEAMS APPROXIMATELY AS SHOWN, USING 2-3 LONG PILES PER BALE TO ANCHOR THE BALES IN PLACE. THE USE OF DISTRICT BALES WILL ALLOW FOR EASY REMOVAL AT SEVERAL DRIVEWAYS.
4. PROCEED WITH THE REMAINDER OF THE FILLING, COMPLETING THE WORK AS RAPIDLY AS POSSIBLE. COMPLETE RIPRAP.
5. PLACE A MINIMUM OF A 4" THICKNESS OF TOPSOIL OVER ALL SIDE SLOPE AREAS. IMMEDIATELY SEED & MULCH.
6. REPAIR ALL POINTS OF EROSION AS THEY OCCUR.
7. REMOVE HAY BEAMS ONLY AFTER COMPLETE STABILIZATION OF THE COMPLETED GROUND SURFACES.

8. Remove silt fence once area is stabilized

NOTES

1. OBTAIN ALL NECESSARY PERMITS AND APPROVALS PRIOR TO ANY CONSTRUCTION.
2. THE DRIVEWAY SHALL BE LEVEL FOR AT LEAST A 50 LENGTH AT 2'-0" OR MORE ABOVE THE TOP OF THE PIPE SO THAT IF DRIVEWAYS ARE OVERTOPPED, THE VELOCITY OF THE WATER WILL BE LOW ENOUGH TO AVOID EROSION. FOR A 100 YEAR STORM, THE DRIVEWAY ABOVE WILL BE OVERTOPPED BY LESS THAN 1.3 FEET AND THE VELOCITY WILL BE ABOUT 2.5 FEET PER SECOND.
3. CULVERTS FOR THE REMAINDER OF THE DRIVEWAYS SHALL BE INSTALLED IN ACCORDANCE WITH THE CONTROLS SHOWN ON THIS PLAN. THE LOWEST ELEVATION FOR ANY PART OF THE DRIVEWAY SURFACE SHALL BE AT LEAST 2'-0" ABOVE THE TOP OF THE PIPES.

3. Brook to be diverted through one pipe while the other pipe is replaced, utilizing sand bags in stream bed

4. Complete work during period of low flow in brook

1373 Received June 24, 1931
@ 11:30 AM

FILE #244 Supp. C

R. P. Dimmock
Town Clerk

Modified for culvert replacement: 4-25-22

	MINER & BROWN SUBDIVISION		
	EAST STREET & NEW BOSTON ROAD ANDOVER, CONNECTICUT		
DATE: 3-04-81	DRAWN: M.K.D.	PROJECT: 8107	
SCALE: as shown	CHECK: R.P.D.	SHEET: 4 of 4	
R. P. DIMMOCK ASSOCIATES CONSULTING ENGINEERS			
6 WALNUT DRIVE MARLBOROUGH, CONNECTICUT			

A 244 SUP C

A 244 SUP C

