

LOCATION MAP
SCALE: 1"=1000'

The diagram illustrates the installation of an Anti-Tracking Pad. It shows a rectangular pad placed on a road surface. The pad has a width of 4' and a length of 50' MINIMUM. The pad is composed of a 4" MIL thick layer of ROAD STABILIZATION FILTER FABRIC. The pad is installed adjacent to a PUBLIC ROAD. The diagram is labeled "ANTI-TRACKING PAD" and "NOT TO SCALE".

MAP AND SURVEY HAVE BEEN PREPARED PURSUANT TO THE REGULATIONS OF
CUT STATE AGENCIES SECTIONS 20-300b-1 THROUGH 20-300b-20 AND "THE
STANDARDS FOR SURVEYS AND MAPS IN THE STATE OF CONNECTICUT" AS
BY THE CONNECTICUT ASSOCIATION OF LAND SURVEYORS ON SEPTEMBER 26,

BOUNDARY DETERMINATION CATEGORY IS A "DEPENDENT RESURVEY"
TYPE OF SURVEY PERFORMED AND THE MAPPED FEATURES DEPICTED HEREON ARE
IN ACCORDANCE WITH THE REQUIREMENTS OF AN A-2/T-2 SURVEY.

ORIZONTAL BASELINE CONFORMS TO A CLASS A-2 ACCURACY.
TICAL BASELINE CONFORMS TO A CLASS V-2 ACCURACY.
GRAPHIC FEATURES CONFORM TO A CLASS T-2 ACCURACY.

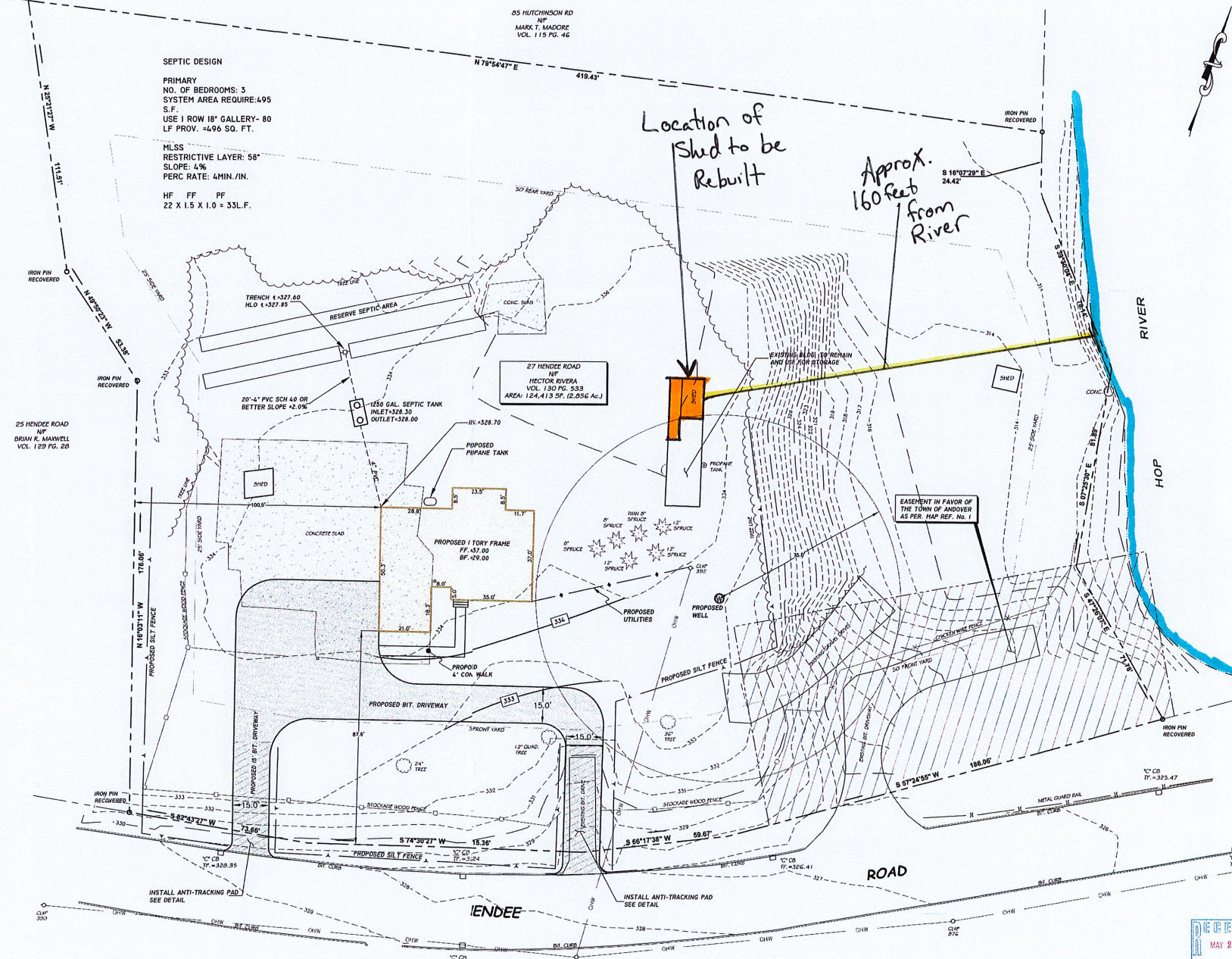
ORTH ARROW AND BEARINGS ARE BASED UPON THE CONNECTICUT STATE
ITE SYSTEM N.A.D. 1983 (2011). THE ELEVATIONS ARE BASED UPON THE NORTH
VERTICAL DATUM OF 1988 (NAVD 88) USING GEOID 12A. COORDINATES AND
NS WERE DETERMINED FROM RTK GPS OBSERVATIONS MADE ON MAY 11, 2018.

SUBJECT PARCEL IS LOCATED IN THE ARD ZONE.

GROUND UTILITIES, STRUCTURES AND FACILITY LOCATIONS DEPICTED AND NOTED HAVE BEEN COMPILED, IN PART FROM RECORD MAPPING SUPPLIED BY THE ABOVE COMPANIES OR GOVERNMENTAL AGENCIES AND FROM OTHER SOURCES. THESE ARE TO BE CONSIDERED AS APPROXIMATE IN NATURE. ADDITIONALLY, OTHER UTILITIES MAY EXIST ON THE SITE, THE EXISTENCE WHICH IS UNKNOWN TO OSWALD. REVEYING. ALL CONTRACTORS ARE REQUIRED TO CONTACT "FOR-YOU-DIG AT 1-800-922-4455 FOR LOCATION AND OR STAKED OUT OF ANY HOLE TO ANY EXCAVATION.

FRANCES:
IDARY SURVEY PREPARED FOR RENETTE NADEAU SHOWING PROPOSED LOT SPLIT
550R LOT 13 & BOUNDARY ASSESSOR LOTS 13,14 & 16 27 HENDEE ROAD
1, CONNECTICUT SHEET 1 OF 1 JOB NO. 2006-004 DATED MARCH 28, 2006,
"40" FILE NO. NA06004X, ROB HELLSTROM LAND SURVEYING 32 MAIN STREET
CONNECTICUT P.O. BOX 497 COLUMBIA, CONNECTICUT 06237-0497 (860)
37.

10. THIS SHALL NOT BE UTILIZED BY ANY PERSON, FIRM OR CORPORATION WITHOUT THE SPECIFIC WRITTEN PERMISSION OF OSWALD BENT LAND SURVEYING.



Map + Site Plan Rev 1
7/29/21
IWWC 21-13

Proposed demolition and reconstruction
of wooden framed shed.

Hector Rivera 27 Hendee Road Andover CT

RECEIVED
MAY 29
By _____