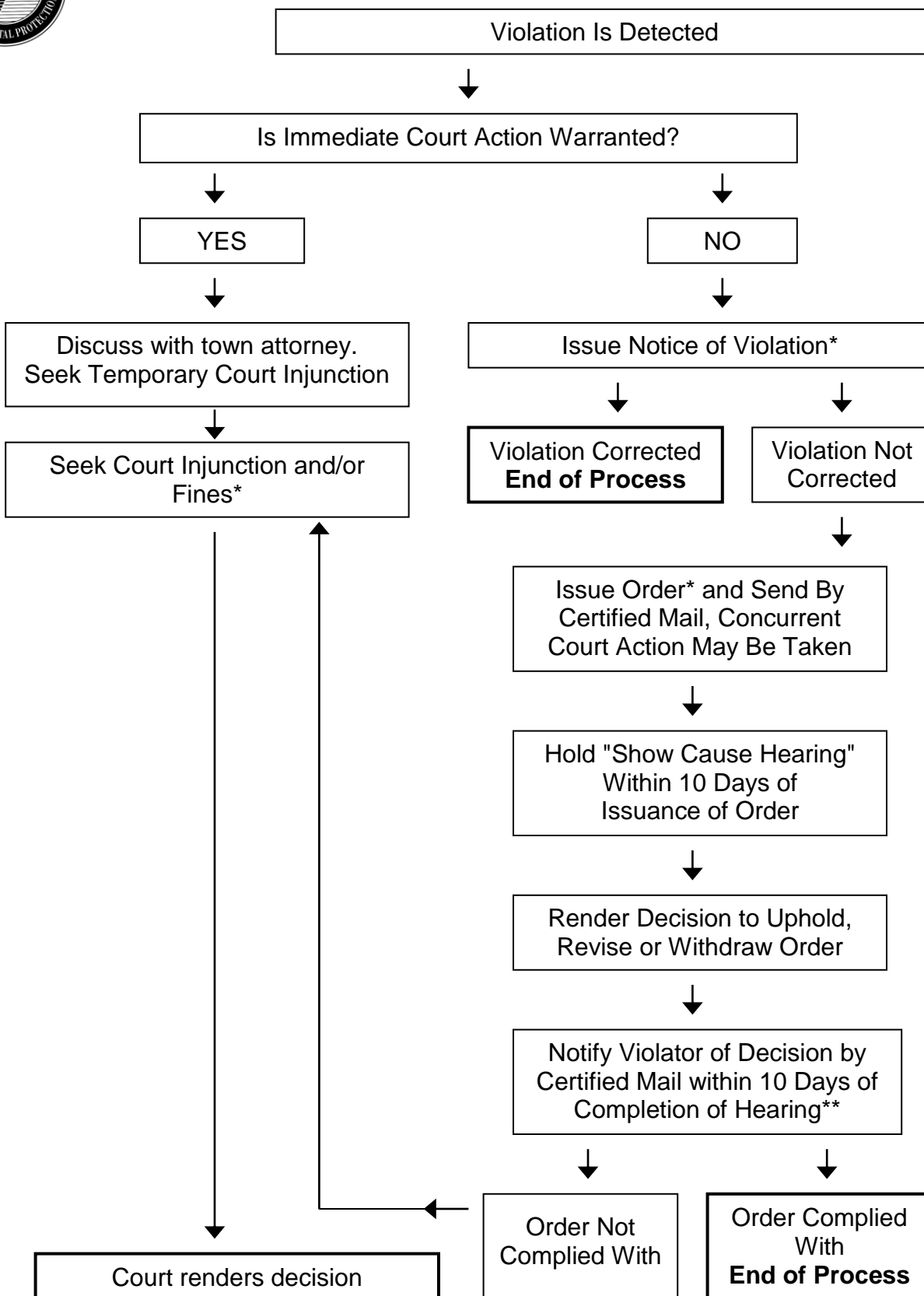




## ENFORCEMENT FLOW CHART (CGS Sec. 22a-44)



\* Complete the DEP Statewide Inland Wetlands & Watercourses Activity Reporting Form and submit no later than the 15<sup>th</sup> day of the month following the month in which the action was taken.

\*\* Although not required by statute, it is good practice to publish a notice of the decision in the newspaper.